

GENERAL INFORMATION

Address:

Street: 400 North Alton Street, Lebanon, Illinois 62254

Mailing: The Hettenhausen Center for the Arts, c/o McKendree University, 701 College Road, Lebanon, Illinois 62254

Front of House Services:

Theater Director

TBD

Assistant Director of Patron Services (Box Office)

Elizabeth Crabtree

eacrabtree@mckendree.edu

O: 618-537-6863

Technical Services:

Technical Director

Douglas Magnussen

dsmagnussen@mckendree.edu

O: 618-537-6551

Assistant Technical Director

Julia Hunt

jnhunt@mckendree.edu

O: 618-537-6551

Area Hotel:

Hilton Garden Inn

360 Regency Park Drive, O'Fallon, Illinois 62269

TEL: 1-618-624-4499

FAX: 1-618-624-5599

8.5 miles west of theater

Dining:

On-campus:

1828 Café (near chapel, Clark and Carnegie Halls in the heart of the campus)

Hours vary – Monday – Thursday 7:30 am – 10:00 pm & Friday 7:30 pm to 7:30 pm

618-537-6985

Ames Dining Hall (near the bookstore)

Hours - Hot breakfast: Monday - Friday: 7:00 a.m. - 9:00 a.m. Continental breakfast: Monday -

Friday: 9:00 a.m. - 10:00 a.m. Lunch: Monday - Friday: 11:00 a.m. - 1:30 p.m. & Saturday -

Sunday: 11:00 a.m. - 1:00 p.m. Dinner: Monday - Friday: 4:30 p.m. - 7:00 p.m. & Saturday -

Sunday: 5:00 p.m. - 6:30 p.m.

Off-Campus:**Cobblestone Eatery and Drinkery Foundry**

115 W St. Louis St.

Lebanon, IL

618-808-0330

Bar and Grill

220 W St. Louis St.

Lebanon, IL

618-537-4492

Cafe

1818 Chophouse

1405 N Green Mt Rd #100

O'Fallon, IL

618-206-6451

Seafood and Steak

Mexico Tipico

501 S. Madison St

Lebanon, IL

618-808-5020

Mexican Food

Dr. Jazz

230 W. Saint Louis St.

Lebanon, IL

618-537-2200

Grille/Soda Fountain

*Friday – Sunday only

Dairy Queen

412 S Madison St.

Lebanon, IL

618-537-2032

Fast Food

McDonald's

713 S. Madison St.

Lebanon, IL

618-537-9806

Fast Food

Handicapped Access:

Facilities are handicap accessible. There is a wheelchair seating area, transfer seats with removable arms, an elevator, and hearing assistance devices.

3 Main Floor HR 3 Main Floor HL

3 Upper Level HR 3 Upper Level HL

Emergency Numbers:

McKendree University Public Safety: 618-537-6911

Fire: 911

Police: 911

Ambulance: 911

Urgent Care: 618-624-3750, 1512 N. Green Mount Rd. O'Fallon IL

Chiropractic Clinic: 618-537-4407, 110 W. Saint Louis St. Lebanon IL

Dental Clinic: 618-537-2017, 229 W. Saint Louis St. Suite 1. Lebanon IL

Parking:

Trucks, busses, and trailers can be parked in the loading dock. *Shore Power* is available for use and is located in the loading dock. Other vehicles, such as cars will most likely park by the side entrance to the theater. However, other arrangements can be made for all parking situations.

Laundry: Laundry can be done, however laundry facilities are found off site of the theater.

Time Zone: Central Time Zone

Green Room: Located directly behind stage between scene shop and costume storage.

Stage Managers Console:

SR front wall. Equipped with production communication (headset and announcers mic to dressing room, green room and booth).

Rehearsal Rooms: Band Rehearsal Hall- Back hallway on stage right side.

Choir Rehearsal Hall- Stage Right side hallway. **(Please request if needed)**

Crew: Student workers with professional supervisor/technical director

LIGHTING

Control Console

ETC ION Console 1024, 2ea 2x20 sub-master wings, 1ea ETC Net3 Dual Network Node (Cat #2) with DMX splitters to distribute to cats and flies.

Dimming System

Strand C21 (232 dimmers)

Lighting Inventory:

Strand Ellipsoidal:

20 ea. 19 degree

20 ea. 26 degree

22 ea. 36 degree

1 ea. 26 degree lens tube

2 ea. 36 degree lens tube

ETC Source Four Bodies

30 ea. (575 watt lamps)

ETC Source Four Lens Tubes

2 ea. 19 degree

3 ea. 26 degree

26 ea. 36 degree

3 ea. 50 degree

16 ea. Martin Rush Par 2 Zoom

ETC Source Four Jr. Ellipsoidal:

6 ea. 36 degree

Lighting Inventory Cont'd:

ETC Source Four Par - 15 (with lens kits)

Altman Star Par - 30 (with lens kits)

Par 64 - 12 (Med, or wide lamps, 1000w)

5 ea. Altman 6" Fresnels

8 ea. 10' lighting boom and base

SOUND

Power: 110 volt wall outlets

Wiring: 24 microphone inputs onstage (1-4 SR Pro wall, 5-8 SL Pro wall, 9-16 SR rear wall, 17-24 SL rear wall), 100 ft. snake allows use of all 32 console inputs.

4 onstage monitor outputs (1-3 available at SR & SL Pro wall, 1-4 available at SR& SL Rear wall.)

Control Location: Rear of house on HR (mix positions in open booth.)

Hearing Assist System: Listen LT-800B-082, 4 Receivers

Monitor/Paging System: Shure Paging System, Areas Covered- Dressing Rooms, Scene Shop, Light Booth, Green Room.

Production Communications:

Telex Wired Headsets, 2 Channels, 8 Headsets, Input Locations: SL Pro wall, SR Stage Managers position, Sound Booth, Light Booth, Cat 1, Cat 2, Follow Spot Booth, Other Positions available.

EarTec Wireless Communication System- 2 Channel, 8 EarTec Wireless headsets.

Equipment Inventory:

Mixing Consoles: 1 Yamaha LS9-32, 32 inputs (24 stage inputs), 16 Omni Outputs (4 amped stage sends/mixes)

(<http://www.yamahaproaudio.com/global/en/products/mixers/ls9/downloads.jsp>)

Fixed Speakers

4 L'Acoustics Arcs Wide – right and left speaker clusters, 2 per cluster (<http://www.l-acoustics.com/products-arcs-wide-117.html>)

2 L'Acoustics SB18m – Subwoofer; 1 each mounted above right and left speaker clusters (<http://www.l-acoustics.com/products-sb18m-subwoofer-118.html>)

1 JBL ASB6128 – Subwoofer; flown over center of apron (<http://www.jblpro.com/www/products/installed-sound/ae-series/asb6128#.W6AU785KiM8>)

5 L'Acoustics 5xt – front fills; mounted in front face of apron (<http://www.l-acoustics.com/products-5xt-120.html>)

Portable Speakers:

4 Yamaha SM12V Wedges, 2 Yamaha S-12 Me, 2 Yamaha CM15V, 2 Yamaha CW118V

(http://www.yamahaproaudio.com/global/en/products/speakers/clubv_series/index.jsp)

2 JBL AM6215/95 wedges (https://www.jblpro.com/ProductAttachments/AM6215_95.pdf)

Audio System Amplifiers:

4 ISA 450 Professional Amplifier (<https://www.qsc.com/cinema/products/power-amplifiers/isa-series/isa450/>)

2 L'Acoustics LA4X Power Amplifier (<http://www.l-acoustics.com/products-la4x-134.html>)

3 ISA 450 Professional Amplifiers mounted in portable rack

Instrument Amplifiers:

Ampeg (see pictures page 10)

PF 800 Head

PF-410HLF

PF-115LF

Microphone Inventory:

- **Shure**

- 11 SM58
- 2 SM57
- 3 Beta-58
- 4 Beta-87
- 6 Beta 98H
- 1 PG-81
- 4 ULX Lapel Mic (can be either lapel or handheld 58 below)
- 4 Wireless SM58 ULXP

- **Heil** (<http://www.heilsound.com/pro/>)

- 3 PR-35
- 4 PR-30B
- 1 PR-40
- 2 PR-22
- 2 PR-20 UT
- 1 PR-31BW
- Drum Mic Kit Includes: 3 PR-28, 2 PR-22, 2 PR-30B, 1 PR-48

- **Audio-Technica**

- 6 AT 871R Floor Boundary Mic

- **Crown**

- 3 PCC-160, 1 PZM-Audio Force

- **AKG**

- 2 C-1000-S

Playback:

MacBook laptop, audio out, HDMI out

Single CD Playback

-Tascam CDRW 750- House Recorder

-Tascam CD A500 (CD/Tape)

PROJECTION

Epson 12,000 lumen laser light source projector.

Fixed position front of house (above lighting booth)

Projection will fill the cyclorama.

CARPENTRY

Seating- 488

Cat#1 – 9'4" from PL, 28'6" from deck (approx. 29' throw to plaster)

Cat#2 – 26'8" from PL, 31'6" from deck (approx. 41' throw to plaster)

Cat#3 – 60'4" from PL, 31'6" from deck (approx. 68' throw to plaster)

Proscenium opening = 46'0" wide x 23'0" high x 3' deep

Apron @ widest point = 16' edge to plaster, 14'8" edge of pit cover to plaster

Apron @ narrowest point = 10'5" edge to plaster, 9' floor edge to plaster

Wing space; SR-12' from proscenium to tab curtains, 18' proscenium to locking rail; SL-16'

Proscenium to tab curtains, 20'6" proscenium to wall.

Playing space between masking legs left and right of center = 19'5" (38'10" total)

Fly system - Single purchase counterweight (26 sets)

Batten width 63'

All electrics are trimmed to 20'

Grand Border (TEASER): trim 19'8", Border #2: trim 20'4", Border #3: trim 20'4", Border #4: trim 19'

Line Set #	Description	From Plaster	Dimensions
1	Grand Drape	8"	27'6" H X 57' W 25oz. Ink Blue Velour 50%
2	Grand Border	1'6"	10' H X 63' W 25oz Ink Blue Velour 50%
3	Electric #1	3'	63' wide double pipe, raceway stage pin
4	Sign/GP	4'11"	
5	Legs #1	5'6"	28'6" H X 12' Wide 25oz black velour flat
6	Movie Screen	6'10"	24' H X 20' W White
7	Border #2	9'7"	10' H X 63' W 25oz black velour flat
8	Electric #2	10'10"	3 ea. 6 circuit drop boxes
9	GP	12'3"	
10	GP	13'	
11	Legs #2	14'2"	28'6" H X 12' W 25oz black velour flat
12	Border #3	16'6"	10' H X 63' W 25oz. black velour flat
13	Electric #3	18'1"	3 ea. 6 circuit drop boxes
14	GP	19'7"	
15	GP	20'10"	
16	Traveler	21'7"	26' H X 63' W 25oz black velour 50%
17	Border #4	22'10"	10' H X 63' W 25oz black velour flat
18	Electric #4	25'6"	4 ea. Drop boxes = 18 circuits
19	GP	26'11"	
20	GP	28'3"	
21	Border #5	29'7"	10' H X 63' W 25oz black velour flat
22	Legs #4	30'4"	28'6"H x 12' W 25oz black velour flat
23	Black Scrim	31'9"	29'H X 63' W black sharkstooth scrim
24	Cyc Lights/Electric #5	33'6"	6ea. Altman 2 cell sky cys
25	Blackout Curtain	35'6"	28'6"H X 48' W 25oz black velour flat
26	Cyclorama	36'6"	28'6"H X 63' W White RP cyclorama



Stagecraft
Industries, Inc.

PORTLAND, OR - SEATTLE, WA - CONCORD, CA

400 AMP

120/208 VAC 3PH, 4W, 60HZ

LIGHTING COMPANY SWITCH
400A, 3Ø, 4-WIRE PLUS GROUND
FOR STAGE LIGHTING USE ONLY

ØA



ØB



ØC



OFF

ON



DANGER! HIGH VOLTAGE

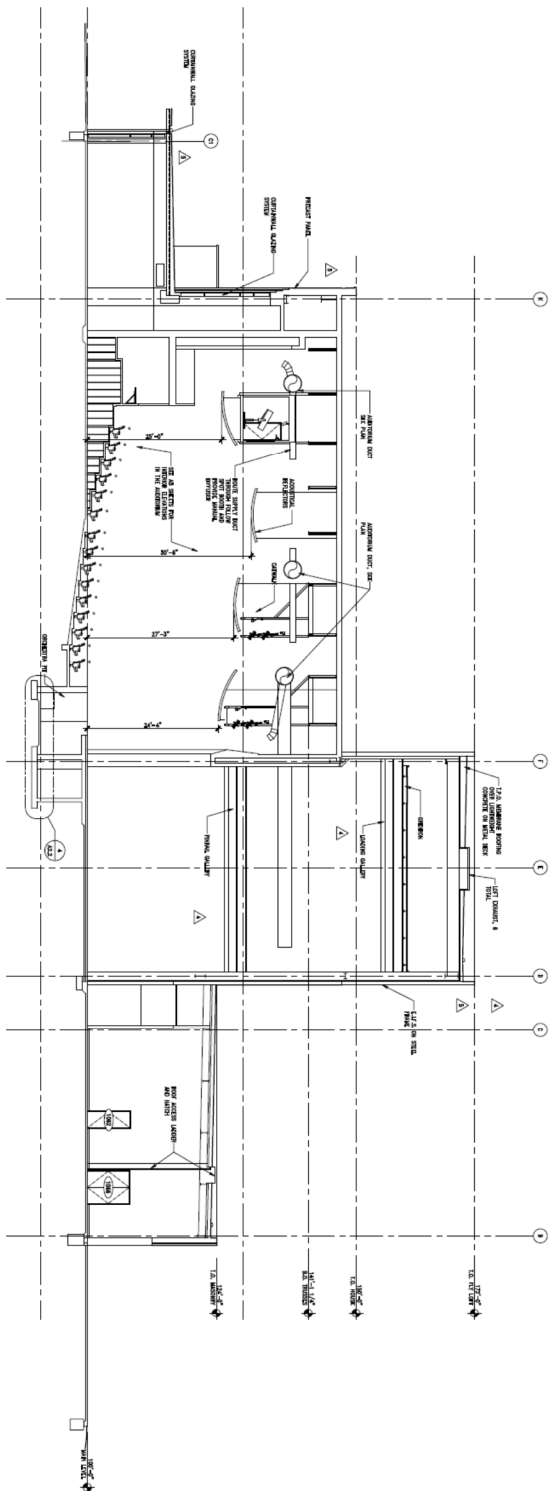
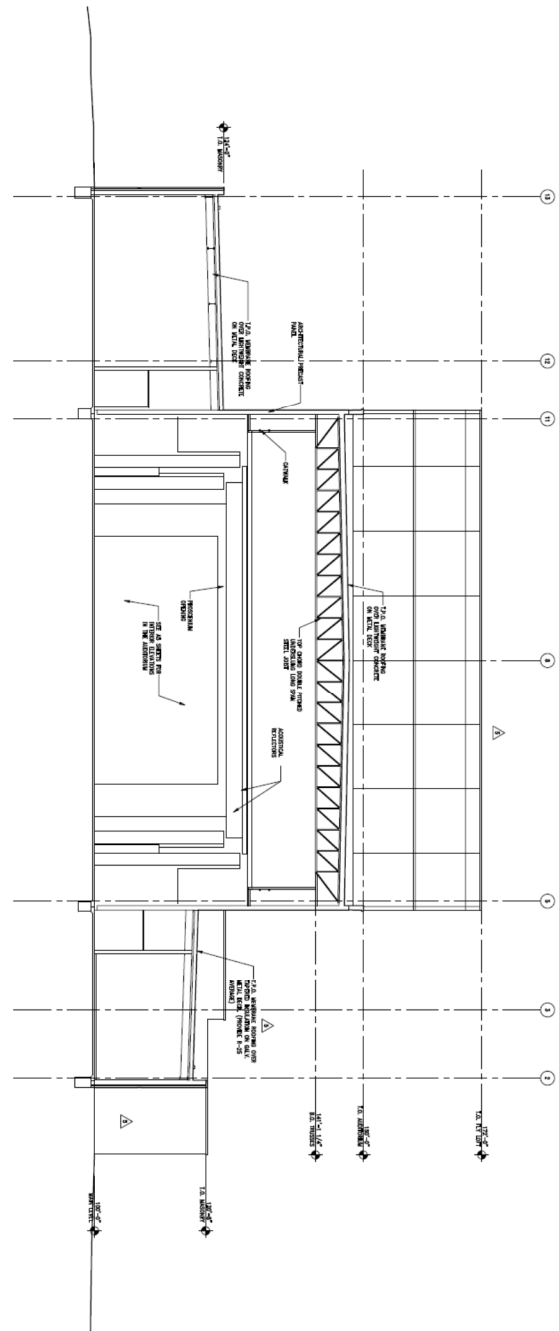
OPERATION BY AUTHORIZED PERSONNEL ONLY

CONNECTIONS MUST BE MADE
IN THE FOLLOWING ORDER (NEC 520-53):

- 1ST GROUND
- 2ND NEUTRAL
- 3RD A, B & C PHASES

DISCONNECT IN REVERSE ORDER

GROUND NEUTRAL NEUTRAL ØA ØB ØC



1
ALU Longitudinal Section thru Auditorium and Fly Loft
Scale 1/8" = 1'-0"

11 Transverse Section thru Auditorium
A13 Scale 1/8" = 1'-0"

**Russel E. and Fern M. Hettenhausen
Center for the Arts**
McKendree College
701 College Road
Lebanon IL 62254

Exterior Elevations

Mackey Mitchell Associates

S.M. Wilson & Co.
Contractor Manager

Thouvenot, Wade & Moerchen
Civil Engineer

Alper Audl, Inc.
Mechanical Engineer

William Tao & Associates
MEPP Systems Consultant

Schuler Shook
Theater Consultant

Stan Roller & Associates, Inc.
Acoustical Consultant

A3.3

