



McKendree  
Presents

2018-19  
Season

Cirque  
Éloize

Western-themed,  
circus-theater  
extravaganza!

THE Hett

CENTER FOR THE ARTS



Please support our advertisers —  
they help make **The Hett Great!**

**FIND YOUR NEXT  
ADVENTURE**

ATTRACTIONS • EATERIES • SHOPPING & MORE



**ILLINOISouth  
TOURISM**

ILLINOIS  
ARE YOU UP FOR  
AMAZING?  
*al in*

Contact us today to  
request your FREE  
2018 Commemorative  
Visitors Guide

618-257-1488 | www.ILLINOISouth.org



# McKendree Presents 2018-19 Season at a glance

tickets: [www.theHett.com](http://www.theHett.com)  
618.537.6863

## Performance Series



The Midtown  
Men pg. 5

Thur. & Fri.— 7:30 pm  
Oct. 25 & 26



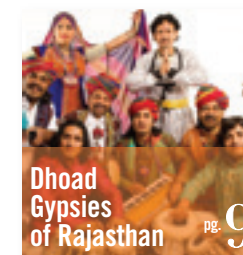
United States Air  
Force Band of  
Mid-America pg. 13

Tue., Wed., Thur.—  
Dec. 11, 12, 13, 7:30 pm



The Second  
City pg. 7

Fri.—Sept. 28  
8:30 pm



Dhood  
Gypsies  
of Rajasthan pg. 9

Sun.—Oct. 7  
3:00 pm



Jaimee Paul  
with  
Leif Shires pg. 11

Tue.—Nov. 13  
7:30 pm



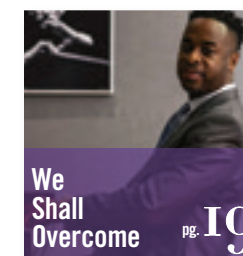
Imago  
Theatre:  
FROGZ pg. 15

Wed.—Jan. 30  
10:00 am & 7:00 pm



Aquila  
Theatre:  
Frankenstein pg. 17

Mon.—Feb. 11, 7:30 pm  
Tue.—Feb. 12, 10:00 am



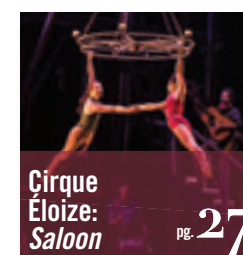
We  
Shall  
Overcome pg. 19

Fri.—Feb. 22  
7:30 pm



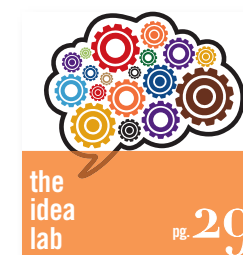
Third  
Coast  
Percussion pg. 25

Wed.—Feb. 27, 10:00 am  
Thur.—Feb. 28, 7:30 pm



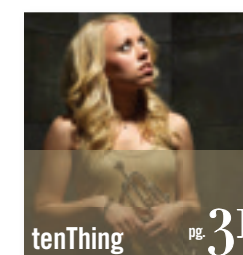
Cirque  
Éloize:  
Saloon pg. 27

Wed.—Mar. 6  
7:30 pm



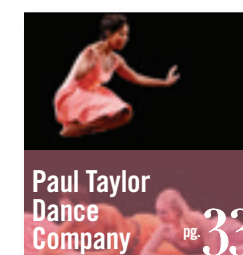
the  
idea  
lab pg. 29

Tue.—Mar. 19  
7:30 pm



tenThing pg. 31

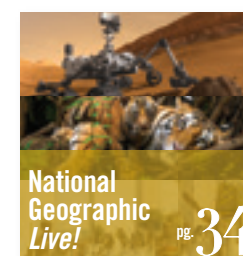
Mon.—Apr. 8  
7:30 pm



Paul Taylor  
Dance  
Company pg. 33

Wed.—Apr. 17  
7:30 pm

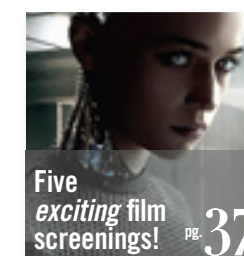
## McCammon Distinguished Speaker Series



National  
Geographic  
Live! pg. 34

Fri.—Sept. 14, 7:30 pm  
Wed.—Oct. 17, 7:30 pm  
Wed.—Jan. 23, 7:30 pm

## Film Art Series



Five  
exciting film  
screenings! pg. 37

Wed.—Sept. 26, 7:00 pm  
Thur.—Oct. 11, 7:00 pm  
Mon.—Nov. 26, 7:00 pm  
Wed.—Dec. 5, 7:00 pm  
Thur.—Mar. 21, 7:00 pm

## McKendree University Series



Theatre, Choral,  
Jazz, Dance,  
& more pg. 39

Various dates  
throughout 2018 & 2019



Please support our advertisers –  
they help make The Hett *Great!*



TheBANK of Edwardsville

here

150 years and counting...

CELEBRATING  
1868 **150** 2018  
**TheBANK**  
of Edwardsville

www.4thebank.com  
**618-656-0098**



*Ahner's*  
"Your hometown florist"



**Florals & Home Décor  
Fudge & Chocolate  
Gourmet Food**

The finest parties and gatherings begin with *Ahner's*. Our love of entertaining is just not with florals, we also have an outstanding line of gourmet foods. This will be a great way for you to enhance traditions and celebrate life with savory recipes and elegant designs.

New Baden  
618.588.4215

Ahnerflorist.com



**CREASON-EDWARDS  
& CIMAROLLI**

CPAS + FINANCIAL ADVISORS

Debi Edwards\* Dave Cimarolli\*  
Kevin Edwards\* Carol Elder

***We are proud to support the  
Hettenhausen Center  
for the Arts. Enjoy the show!***

4000 N. Belt West 618-233-1001  
Belleville, IL 62226 www.ceccpas.com

*\*Securities offered through 1st Global Capital Corp.,  
Member FINRA, SIPC. Investment advisory services  
offered through 1st Global Advisors, Inc.*

Dear Friends, *Here it is!*

Here is your 2018-2019 season brochure for McKendree Presents and the Hettenhausen Center for the Arts. Inside these pages, you will find performers and performances from all over the globe and from every discipline of the arts.

Our mission is simple: bring the finest performing arts to the Metro East and make them accessible to as many people as possible. We strive every year to succeed in that mission and we are grateful for our patrons, donors, advertisers and sponsors for their help in allowing us to reach that goal.

The Hett's remarkable acoustics, intimate seating and first-rate customer service have made it the premier arts venue in the Metro East. If you decide to take in one of our shows, we think you'll agree.

Whether you are a returning patron or a first-time friend, we look forward to seeing you—at the Hett!

Sincerely,

Peter J. Palermo, Director  
Russel E. and Fern M. Hettenhausen Center for the Arts



McKendree Presents wishes to thank *these generous donors!*



**Friends  
OF THE HETT**



Funded in part by the  
Monsanto Rural Community  
Arts Education Program

KeepArtHappening.org



This program is partially  
supported by the Illinois Arts  
Council, a state agency





“As good as popping ‘*Meet the Beatles*’ on my turntable for the first time!”

Editor, *Time* magazine

# THE MIDTOWN MEN

Stars from the Original Cast of *Jersey Boys*

“Superb. Bravo!”

Paul Anka

## The Midtown Men

Thursday, October 25, 2018  
7:30 PM

Friday, October 26, 2018  
7:30 PM

\$38 adult, \$36 senior,  
\$20 student/child

McKendree University students **FREE**

“Inspired!”

New York: *Daily News*

Four Broadway veterans deliver a musical tour de force celebrating the best of the Sixties. Tony Award winner **Christian Hoff**, Michael Longoria, Daniel Reichard and Tony Award nominee **J. Robert Spencer** sing favorite hits by The Beatles, The Rascals, The Turtles, Motown, The Four Seasons, and more.

These talented entertainers shared the Broadway stage for over a thousand performances in the mega-hit “*Jersey Boys*.” Now, as **The Midtown Men**, they have thrilled crowds on concert stages across the U.S., Canada and in Beijing, performing over 600 shows and singing with 31 major symphony orchestras. The Midtown Men have delighted television audiences on “*The Today Show*,” “*Good Morning America*,” “*Access Hollywood*,” “*Katie*,” and “*The Chew*,” and on two public television concert specials. Their first radio single, “*All Alone on Christmas*,” was written and produced by rock icon and “*Sopranos*” star Steven Van Zandt and backed by Bruce Springsteen’s E Street Band. The group performed the song at the White House for the National Christmas Tree Lighting Ceremony.

Generously supported by:

David, Lynn, Jerry  
and Sharon Cornell

Corporate sponsor:

**TheBANK**  
of Edwardsville



Please support our advertisers—  
they help make **The Hett Great!**

All of us at MM&R would like to wish everyone  
the best for a successful season!

BANKING LAW • BUSINESS LAW  
COMMERCIAL & CIVIL LITIGATION  
ESTATE PLANNING • TAXATION

*Providing Broad Experience with a Regional Focus Since 1984.*

618.656.2244 618.234.9800 618.327.4300 314.421.2325 573.768.9742  
EDWARDSVILLE, IL BELLEVILLE, IL NASHVILLE, IL ST. LOUIS, MO PERRYVILLE, MO

WWW.MMRLTD.COM

*Shareholders*  
Patrick B. Mathis  
George E. Marifian  
Kevin J. Richter  
Mark J. Stegman  
Mark S. Schuver  
Gregory W. Coffey  
William J. Niehoff  
Kelli E. Madigan  
Bradley W. Small  
Mary E. Lopinot  
Deanna L. Litzenburg  
Philip D. Speicher  
Laura E. Schrick  
Sandra J. Tatoian  
Beth K. Flowers

*Associates*  
Natalie T. Lorenz  
Rebecca K. Wohltman  
Colin C. Clark  
Melissa C. Meirink  
Amy C. Randazzo  
Allyson T. Schwab

*Of Counsel*  
Charles M. Lock  
Barry D. Dix  
Clyde L. Kuehn

**MM  
&R**

MATHIS  
MARIFIAN  
& RICHTER LTD  
ATTORNEYS AT LAW

# The Second City®

**The Second City opened its doors on a snowy Chicago night in December 1959, and a comedy revolution began.** The small cabaret theater grew to become the most influential and prolific comedy empire in the world, developing a unique way of creating art and fostering generations of superstars. The legendary improvisational comedy club launched the careers of John Belushi, Steve Carell, Stephen Colbert, Tina Fey, Keegan-Michael Key, Bill Murray, Mike Myers, Gilda Radner, Alan Arkin, Joan Rivers, and many more.

**Fast and always spectacularly funny.** Second City is celebrating 60 years of cutting-edge satire, improvisations, and sketch comedy. It has earned a reputation as the world's premier comedy club, theater, and school of improvisation, with live shows every night in Chicago, Toronto, and Hollywood. Its self-mocking name comes from the title of an article about Chicago that appeared in *The New Yorker* in 1952.



**The Second City**

**Friday, September 28, 2018**  
**8:30 PM** (please note: *later* start time)

**\$20** adult, **\$18** senior,  
**\$10** student/child

McKendree University students **FREE**

*Corporate sponsor:*

**MM  
&R**

MATHIS  
MARIFIAN  
& RICHTER LTD  
ATTORNEYS AT LAW

  
**dancestation**

Owner/Director Elizabeth Conway  
20 West State St | O'Fallon, IL 62269 | 618-632-1217  
[www.dancestation.biz](http://www.dancestation.biz)

Ages 3 - Adult | Beginner / Intermediate / Advanced



**Offering**  
**a full professional**  
**curriculum in Ballet,**  
**Pointe, Jazz, Tap,**  
**Modern, and**  
**Broadway**

**FOUNDRY**  
*cafe and market*

**- HOURS -**  
Mon - 7 am - 3 pm  
Tues - Thurs - 7 am to 5 pm  
Fri - 7 am - 7 pm  
Sat - 8 am - 7 pm  
Sunday - CLOSED

**- LOCATION -**  
220 W. St. Louis Street  
Lebanon, IL 62254

[foundrycafemarket.com](http://foundrycafemarket.com)

**Lunch Served Daily from 11-4**

**Farm Fresh Breakfast every Saturday morning from 8-10am**

**We accept RESERVATIONS - 618-537-4492**



Please support our advertisers —  
they help make **The Hett Great!**

**Proud Sponsors of The  
Hettenhausen Center for the Arts**



Welcome to the brighter side of life. At Hilton Garden Inn, you'll find an open, inviting atmosphere with warm, glowing service — from the first hello to the next. And simple, thoughtful touches you'll delight in.

Your room is your retreat, with an *ahhhh*-inspiring bed and fresh, fragrant Keurig® coffee by the cup. Downstairs, the fitness center and wireless printing keep you polished and productive, and the Wi-Fi is always free.

Our goal is to make your stay better and brighter. If something isn't just the way you like it, simply let any hotel team member know, and we will make it right. Guaranteed.



**Hilton  
Garden Inn®**  
St. Louis Shiloh/O'Fallon  
618-624-4499 | stlouisofofallonil.hgi.com

# Dhoad Gypsies of Rajasthan

Direct from Jaipur, India, come “the cultural ambassadors of Rajasthan,” a passionate and spirited collective of musicians, dancers, troubadours, poets, and a *fakir* (fire eater). Dhoad takes you on a mesmerizing journey filled with hypnotic, complex melodies and intense grooves that blend Hindustani classical and Sufi devotional music.

The vibrant, colorful show and captivating sound is an invitation to the deep, mysterious life of semi-nomadic desert tribes. Dhoad celebrates the rich history of Rajasthani music and dance to pay true homage to the Rom — Gypsies who left India 1,000 years ago. Founder and Artistic Director **Rahis Bharti** is a 7th-generation descendant of the courtier musician caste called *Khan Saheb*, who performed for the royal courts of Indian rulers, the *Maharajas*.

The company has performed more than 1,100 concerts in 100 countries over the last 16 years, most notably at Queen Elizabeth II's Diamond Jubilee, Mick Jagger's birthday party, for former French president François Hollande, and the Prime Minister of India.



## Dhoad Gypsies of Rajasthan

Sunday, October 7, 2018  
3:00 PM

\$26 adult, \$24 senior,  
\$10 student/child

McKendree University students **FREE**

Generously supported by:  
**Dr. Frank and  
Mrs. Jane Spreng**



Please support our advertisers –  
they help make **The Hett Great!**

**We're dedicated  
to our communities.**  
You can bank on it.

As a not-for-profit organization, we share our  
success with you and the communities we serve.

In 2017, we donated \$424,000 and provided  
2,400 volunteer hours for a variety of civic efforts  
throughout the region.

**Visit [scu.org](http://scu.org) to learn more about the  
credit union difference!**



Federally  
insured  
by NCUA

[www.scu.org](http://www.scu.org)  
f t i y



## HAC Wants YOU!

Highland Arts Council actively promotes Visual and  
Performing Arts in and around the Highland  
Community through many activities and projects:

- Highland's First-Class Art Fair: 'Art in  
the Park,' held annually 2nd weekend  
in October
- Art of Soul Educational Program  
Feb/March
- Street Art Festival Unity Project
- The Art Affair Fundraiser Feb 9, 2019
- Youth Arts Event to highlight art from  
local schools Nov 17, 2018

We're looking for Art Lovers, Artists, and People  
who want to join a fun community organization.

Our meetings are held the first Monday of each  
month at 1312 Broadway @ 6:30 PM



**For more information,  
visit [HighlandArtsCouncil.org](http://HighlandArtsCouncil.org)  
Or Call 618-558-0054.**



## Even the biggest goals start with simple steps

Contact an agent or financial representative in our St. Clair/Clinton Agency to see how  
taking a few small steps now can lead to a bright financial future.

**1-866-COUNTRY (1-866-268-6879) | [COUNTRYFinancial.com](http://COUNTRYFinancial.com)**

0418-542HO

# Jaimee Paul

featuring trumpeter **Leif Shires**



## Jaimee Paul

**Tuesday, November 13, 2018  
7:30 PM**

**\$26 adult, \$24 senior,  
\$10 student/child**

McKendree University students **FREE**

**A jazz maven with sultry, bluesy pipes delivers impressive tributes  
to Etta James, Billie Holiday, and Nina Simone.**

Raised in Southern Illinois, singing in school and church choirs, **Jaimee Paul** was  
influenced by gospel and blues but cultivated a special place in her heart for jazz. From  
an early age, she was attracted to the gospel and jazz traditions of individual  
interpretation, embellishment, and strong rhythmic drive.

She has performed with Lyle Lovett, Wynonna, The Judds, and Kelly Clarkson. Her 2008 debut  
record "At Last," a collection of signature songs associated with the great female jazz and pop  
icons, topped the iTunes Jazz charts. "Bonded," a tribute to James Bond films, reached the  
top ten, while "Hear My Prayer" earned a 2013 Dove Award nomination for Best Inspirational  
Album. Her self-produced album, "Angel Like You," combines jazz standards and original songs.

Her husband, trumpet player **Leif Shires**, has worked with artists across many genres,  
including Kelly Clarkson, Jack White, Eliza and the Bear, Barry Gibb, and T.G. Sheppard.

*Generously supported by:*

**Doug Phillips  
and Associates  
and Jan Phillips**

*Corporate sponsor:*





Please support our advertisers—  
they help make **The Hett Great!**

## EXPLORE THE ART OF FINANCIAL PLANNING

START PLANNING TODAY

### THE CAMBRIDGE CAPITAL DIFFERENCE

#### FEE ONLY

Fee-Only financial planners are different from most advisors because they are paid directly by their clients. This unique independent status allows them to remain direct and unbiased in their advice.

#### OUR PROCESS

We take a comprehensive approach to financial planning, providing an array of customized financial services to each client. With our process, clients benefit from coordinated investments and strategic financial planning.

#### FIDUCIARY STANDARD

We are committed to upholding the RIA Fiduciary Standard. Putting our clients' best interests first is neither a financial nor legal burden on us; it is a logical extension of the relationship we build with each client.

#### PROFESSIONAL DESIGNATIONS

From Certified Financial Planners (CFP®) to Certified Public Accountants (CPA), we provide a diverse team of experts to ensure our clients get the specialized attention their situation deserves.

### 2 CONVENIENT LOCATIONS

#### ST. LOUIS, MO

7110 Oakland Ave.  
St. Louis, MO 63117  
314.454.0501  
888.401.7274

#### O'FALLON, IL

781 Sunset Blvd. Suite 100  
O'Fallon, IL 62289  
618.206.3262  
888.401.7274



## CAMBRIDGE

CAPITAL MANAGEMENT

registered investment adviser

camcapmgt.com



## Make plans to join the PHILHARMONIC SOCIETY OF BELLEVILLE for our 152<sup>nd</sup> year of outstanding music!

### TWO GREAT MUSIC SERIES!

## 2018-2019 SUBSCRIPTION SERIES

ROBERT HART BAKER,  
MUSIC DIRECTOR

#### OCT 13 2018 Stars of Tomorrow

Performances by winners of our annual young artist concerto competition.

#### DEC 9 2018 Christmas Wonders

Ring in the season with our annual Chorale concert with chamber orchestra.

#### MAR 16 2019 French Connection

The orchestra and chorale unite in a performance of Faure's Requiem and other French masterpieces.

#### NOV 17-18 2018 Nutcracker Ballet

with the Belleville School of Ballet

35th Anniversary Production With American Ballet Theater soloists Rachel Richardson and Carlos Gonzales

#### FEB 23 2019 Winter Dreams

An intimate evening of instrumental music featuring musicians from the orchestra.

#### APR 27 2019 Old World Meets New World

Mark Kosower, principal cellist with the Cleveland Orchestra, is featured as soloist in season finale.

### Second Annual Great Pianists of the World Steinway Recital Series by arrangement with Jack Price

#### SEP 15 2018 Valentina Igoshina

"...technical aplomb, an abundance of color and spacious phrasing..."  
Gramophone

#### NOV 10 2018 Cristiana Pegoraro

"...plays not only with brilliance, but with a most engaging finesse..."  
Gramophone

#### JAN 12 2019 Svetlana Smolina

"An outstanding Russian pianist with a luxuriant tone."  
Los Angeles Times

#### FEB 16 2019 Ani Gogova

"dazzling artistic presence"  
"virtuoso technique beyond reproach"

Tickets and Information at [www.bellevillephilharmonic.org](http://www.bellevillephilharmonic.org)

# United States Air Force Band of Mid-America

## United States Air Force Band of Mid-America

Tuesday, Dec. 11, 2018  
7:30 PM

Wednesday, Dec. 12, 2018  
7:30 PM

Thursday, Dec. 13, 2018  
7:30 PM

FREE, tickets required

**Always a guaranteed holiday favorite!** Three nights of patriotic, joyful, and uplifting music by the musical ambassadors of Headquarters Air Mobility Command at Scott Air Force Base are sure to put you in the holiday spirit.

The **United States Air Force Band of Mid-America's** Concert Band is composed of 45 enlisted professional musicians who represent the professionalism and excellence found throughout the U.S. Air Force. The ensemble's diverse repertoire ranges from symphonic band masterworks and traditional marches to modern compositions and jazz. The band also features professional vocal soloists performing a wide variety of popular, classical, patriotic, and holiday selections.



Generously supported by:

Allison Cassens  
Early Childhood  
Development  
Center and  
Dr. Linda Cassens

McKendree Presents:



*Arts* EDUCATION

HETTENHAUSEN CENTER FOR THE ARTS

The Hett is pleased to present a wide variety of professional touring companies programmed specifically for K-12. Our Arts Education Series offers daytime performances for students and exposes them to the transformational power of the arts.

Attendance to any of our performances help students meet Illinois Arts Learning Standards by responding and connecting to the arts. The Arts Education Series offers programs for all ages.

### Reduced Prices for Groups

Call the box office at 618.537.6863 to purchase tickets, priced at \$5 child; 1 free chaperone/ adult for every 10 tickets purchased.

### Educational Opportunities

Educational and study-guide materials are available. Visit [theHett.com](http://theHett.com) under Upcoming Events/ Arts Education for more information.



### Imago Theatre: *FROGZ*

January 30, 2019, 10:00 AM

When the curtain opens on Imago Theatre, what happens next is magical. Lizards, frogs, penguins and all manner of creations come to life thanks to skilled performers of Imago. Part illusion, part puppetry, party comedy, *FROGZ* is a delight for everyone.

Recommended for grades K–5.



### Aquila Theatre Company: *Frankenstein, A Guided Tour*

February 12, 2019, 10:00 AM

The classically trained, modernly hip theatre company, Aquila, returns to the Hett with Mary Shelley's tale of science run amok. Aquila's Guided Tours are not a condensed version of the play, but an educational performance meant to guide students through the play's key scenes.

Recommended for grades 6–12.



### Third Coast Percussion: *Think Outside the Drum*

February 27, 2019, 10:00 AM

A fun and interactive presentation for all ages that introduces the building blocks of music. The master virtuosos of Third Coast Percussion will intersperse performance with teaching moments that introduce elements of music such as rhythm, melody and timbre. TCP is a Grammy-winning ensemble that has garnered critical praise across the globe.

Recommended for all grades.

# imago theatre *FROGZ*

*“Inspired fun!  
A mastery  
of mime,  
dance, and  
acrobatics!”*

*The New York Times*



Generously supported by:

Dr. Delbert L. Harris  
and Mrs. Mary J.  
Metzger-Harris '62

### Imago Theatre: *FROGZ*

Wednesday, Jan. 30, 2019  
7:00 PM (please note: *earlier*  
start time)

\$20 adult, \$18 senior,  
\$10 student/child

McKendree University students  
**FREE**

*School Matinee:*

Wednesday, Jan. 30, 2019  
10:00 AM

\$5 child; for every 10 children,  
one **FREE** ticket for chaperone  
See page 14 for more information.

**Inventive, entertaining, and hilarious!** *FROGZ* is penguins playing musical chairs, a cat trapped in a giant paper bag, and orbs running wild through the audience in a madcap revue of illusion, comedy, and fun. It has been described as Cirque Du Soleil-evoking acrobatics mixed with Mummenschanz-like mime, set in a unique—yet accessible—French-influenced, avant-garde playground. Imago's ingenious masks, mesmerizing movement, outlandish costumes, and original music create a carnival of the absurd, presenting universal themes with a playful touch, as animals and inanimate objects take on human characteristics.

*FROGZ* is the Portland, Oregon-based Imago Theatre's signature work. Seen on stage and television by over a million viewers, it enjoyed two runs on Broadway and put Imago on the international map.

Family friendly entertainment, recommended for ages 3 and older.



Please support our advertisers —  
they help make **The Hett** *Great!*



**1818**  
*Guttry*  
Seafood & Steaks

*Family*  
Owned & Operated

**OPEN**  
TUE-FRI 11AM - 9PM  
SAT 4PM - 10PM  
SUN Brunch 10AM - 2PM  
Dinner 2PM - 8PM

**1818**  
**CHOPHOUSE**

Edwardsville & O'Fallon's  
*Finest Restaurant*  
for Steaks, Seafood & Brunch

**1818Chophouse.com**

**EDWARDSVILLE** 618307-9300 **O'FALLON** 618206-6451

# *Aquila Theatre:* **FRANKENSTEIN**

## *Aquila Theatre:* **FRANKENSTEIN**

**Monday, Feb. 11, 2019**  
7:30 PM

**\$20** adult, **\$18** senior,  
**\$10** student/child

McKendree University students  
**FREE**

*School Matinée:*

## **FRANKENSTEIN:** A Guided Tour

**Tuesday, Feb. 12, 2019**  
10:00 AM

**\$5** child; for every 10 children,  
one **FREE** ticket for chaperone  
See page 14 for more information.

*Generously supported by:*

**Robert and Grace  
Renner Welch  
Endowment**

The classically trained, hip New York theatre company returns to the Hett with Mary Shelley's frightening tale of science run amok. Without considering the consequences of such progress, he succeeds—with terrifying results. After wandering the world alone, the monster eventually comes for Frankenstein's family. Horrific events unfold until the doctor tentatively agrees to create a mate for the creature. Ultimately, the doctor refuses in an effort to spare humanity but bears the terrible and personal penalties of his decision.

Written in 1818, *Frankenstein: The Modern Prometheus* is the first true science fiction novel. Years ahead of its time, it has inspired countless film and stage adaptations. Two hundred years later, Frankenstein still poses a myriad of critical ethical questions about the nature of innovation and the outcome of scientific discovery.



Please support our advertisers –  
they help make **The Hett** *Great!*



**no|limits**

Print Marketing  
*without* boundaries!  
.....  
[www.Stolze.com](http://www.Stolze.com)

3435 Hollenberg Drive, Bridgeton, MO 63044  
**314.209.1997**



**OPEN DAILY**  
11:00am - 2:00am



**115 W St. Louis Street**  
**Lebanon**  
**618-808-0330**



**“He uses his artistry to make  
our world a better place.”**

.....  
Wynton Marsalis

Inspired by the words and actions of Dr. Martin Luther King, Jr., this powerful, genre-defying show is filled with music, joy, and hope. It features repertoire from African-American music traditions that electrified generations of civil rights activists and defenders, interwoven with spoken words from Dr. King’s recorded speeches.

“We Shall Overcome” ties together a lineage of music and culture that includes gospel, classical music, jazz, Broadway and traditional spirituals. From Aretha Franklin to Wynton Marsalis, Duke Ellington to Stevie Wonder, Nina Simone to Donny Hathaway, or music from “the Wiz,” Producer and Musical Director **Damien Sneed’s** understanding of each genre allows him to cover so much musical ground fluidly in a single performance.

He has worked with Wynton Marsalis, operatic soprano Jessye Norman and tenor Lawrence Brownlee, and has toured extensively with Diana Ross, Aretha Franklin, and the Clark Sisters.

# *We Shall Overcome*

A Celebration of  
Dr. Martin Luther King, Jr.

## *We Shall Overcome*

A Celebration of  
Dr. Martin Luther King, Jr.

**Friday, Feb. 22, 2019**  
**7:30 PM**

.....  
**\$26** adult, **\$24** senior,  
**\$10** student/child  
.....

McKendree University students  
**FREE**

*Generously supported by:*  
**Mr. Allen P. Cain**



Please support our advertisers—  
they help make **The Hett Great!**



Join McKendree University as we take the next step  
in the continual pursuit of excellence by supporting  
**FORWARD: The Campaign for McKendree University.**

Visit [McKendree.edu/Forward](http://McKendree.edu/Forward) or contact the  
Office of Development, Alumni and Parent Relations at  
(618) 537-6826

Learn how you can help move  
McKendree University **Forward** today.



**FEZZIWIG'S**  
PURVEYORS OF FINE TASTES SINCE 2007

Premium Loose Leaf Tea & Accessories  
Balsamic Vinegars & Olive Oils  
Gourmet Foods & Chocolates  
Kitchen & Grilling Essentials  
Custom Gift Baskets  
Décor Accessories  
[fezziwigsmarket.com](http://fezziwigsmarket.com)



**Two  
Great  
Stores!**

**FEZZIWIG'S MARKETPLACE**

225 W. 1st St. Oldtown O'Fallon  
Our Flagship Store with Wines!  
Home of Our Recreational Cooking School,  
Garden Courtyard & Vintage Carriage House

**FEZZIWIG'S TEA & GOURMET MARKET**

215 W. St. Louis St. Historic Lebanon

Shop us online at [shopfezziwigs.com](http://shopfezziwigs.com)



Visit Historic  
**LEBANON**  
~City of Art & Education~

**Brickstreet Events:**  
Chocolate Rendezvous – February  
Dickens Fest – April  
May Market – May  
Fall Festival – October  
Witches Night Out – October  
Victorian Holiday – November  
Hometown Christmas – December

Lebanon Chamber of Commerce | 618-537-8420 | [www.lebanonil.us](http://www.lebanonil.us)

## Tickets

### *Friends of the Hett— Ticket Order Form*

#### **Who**

Should use this Form:

Mail ordering tickets is a benefit  
reserved for our membership  
society, the **Friends of the Hett.**

Use this form to purchase your  
tickets by mail for the 2018-2019  
McKendree Presents series.

Beginning July 2 at noon, **Friends  
of the Hett** can also order tickets  
in person, or over the phone by  
calling (618) 537-6863.

#### **How**

To get the **Best Seats:**

##### **1. Become a *Friend of the Hett!***

See page 44 of this brochure  
for information on becoming a  
**Friend of the Hett.** Priority seating  
and seat request conflicts  
will be processed based upon a  
combination of several factors:

- **Friend of the Hett**  
contribution level

- The order in which  
it was received

##### **2. Get your order in early!**

This is the best (and easiest) thing  
you can do to get your order to  
the front of the line. We will begin  
fulfilling purchases in the order  
they are received on July 2 at noon.  
General public sales will begin  
on August 29.

##### **3. Double-check your order!**

Errors on your order form can  
delay the process.

#### **What happens**

Upon turning in this Form:

Tickets will be mailed or placed  
in will call in mid to late August  
(depending on which option is  
selected). Payment will be  
verified before tickets are mailed  
or placed in will call.

All events are held at the  
Hettenhausen Center for the  
Arts (The Hett).

**There are no refunds on ticket  
orders.** Artists, programs, dates,  
prices, and seating configurations  
are subject to change.



Step 1

Fill out Personal Information

Name

Address

City

State

Zip

Work phone

Home phone

Cell phone

Email

Step 2

Join Friends of the Hett to use this Order Form

☐ Yes, I wish to join the Friends of the Hett and receive thank you gifts such as advance ticket purchase privileges, order by mail, waiting list priority seating, ticket exchange privileges and other exciting exclusive benefits (see page 44 for more information).

My order must be received by August 29 to receive priority ordering before the general public.

Please select your category:

☐ Supporter (\$100+) ☐ Patron (\$250+) ☐ Benefactor (\$500+) ☐ Star (\$1,000+) ☐ Directors Circle (\$2,000+) ☐ Other

When noted as a Friend of the Hett, I wish for my name to appear as:

Step 3

Special Request for Your Visit

Please indicate special requests below (the box office will fulfill special requests to the best of our availability but they cannot be guaranteed):

Step 4

Fill out the Friends of the Hett payment information

☐ I am paying by check made out to McKendree University. I will enclose this total with my ticket total at Step 6.

☐ I am paying by credit card. I will add this amount to the Step 6 GRAND TOTAL of the order form below.

Step 5

Select Shows/ No. of Tickets

Add up Single Event Tickets Total at the bottom of each performance column and the GRAND TOTAL in the lower right-hand corner of this form.

	2018												2019											
	PERFORMANCE SERIES												McCAMMON DISTINGUISHED SPEAKER SERIES											
	8:30 p.m. Friday Sept. 28	3:00 p.m. Sunday Oct. 7	7:30 p.m. Thursday Oct. 25	7:30 p.m. Friday Oct. 26	7:30 p.m. Tuesday Nov. 13	7:30 p.m. Tuesday Dec. 11	7:30 p.m. Wednesday Dec. 12	7:30 p.m. Thursday Dec. 13	10:00 a.m. Wednesday Jan. 30	7:00 p.m. Wednesday Jan. 30	7:30 p.m. Monday Feb. 11	10:00 a.m. Tuesday Feb. 12	7:30 p.m. Friday Feb. 22	10:00 a.m. Wednesday Feb. 27	7:30 p.m. Thursday Feb. 28	7:30 p.m. Wednesday Mar. 6	7:30 p.m. Monday Apr. 8	7:30 p.m. Wednesday Apr. 17	7:30 p.m. Friday Sept. 14	7:30 p.m. Wednesday Oct. 17	7:30 p.m. Wednesday Jan. 23	7:30 p.m. Tuesday Mar. 19		
Adult	___ @ \$20	___ @ \$26	___ @ \$38	___ @ \$38	___ @ \$26	___ Free	___ Free	___ Free	___ @ \$20	___ @ \$20	___ @ \$20	___ @ \$20	___ @ \$26	___ @ \$20	___ @ \$20	___ @ \$32	___ @ \$20	___ @ \$26	___ @ \$20	___ @ \$20	___ @ \$20	___ @ \$5		
Senior	___ @ \$18	___ @ \$24	___ @ \$36	___ @ \$36	___ @ \$24	___ Free	___ Free	___ Free	___ @ \$18	___ @ \$18	___ @ \$18	___ @ \$18	___ @ \$24	___ @ \$18	___ @ \$18	___ @ \$30	___ @ \$18	___ @ \$24	___ @ \$18	___ @ \$18	___ @ \$18	___ @ \$5		
Student/Child	___ @ \$10	___ @ \$10	___ @ \$20	___ @ \$20	___ @ \$10	___ Free	___ Free	___ Free	___ @ \$5	___ @ \$10	___ @ \$10	___ @ \$5	___ @ \$10	___ @ \$5	___ @ \$10	___ @ \$10	___ @ \$10	___ @ \$10	___ @ \$10	___ @ \$10	___ @ \$10	___ @ \$5		
Faculty/Staff	___ @ \$5	___ @ \$5	___ @ \$5	___ @ \$5	___ @ \$5	___ Free	___ Free	___ Free	___ @ \$5	___ @ \$5	___ @ \$5	___ @ \$5	___ @ \$5	___ @ \$5	___ @ \$5	___ @ \$5	___ @ \$5	___ @ \$5	___ @ \$5	___ @ \$5	___ @ \$5	___ Free		
McKendree Student	___ Free	___ Free	___ Free	___ Free	___ Free	___ Free	___ Free	___ Free	___ Free	___ Free	___ Free	___ Free	___ Free	___ Free	___ Free	___ Free	___ Free	___ Free	___ Free	___ Free	___ Free	___ Free		
SINGLE EVENT SUBTOTAL	\$ _____	\$ _____	\$ _____	\$ _____	\$ _____	\$ _____	\$ _____	\$ _____	\$ _____	\$ _____	\$ _____	\$ _____	\$ _____	\$ _____	\$ _____	\$ _____	\$ _____	\$ _____	\$ _____	\$ _____	\$ _____	\$ _____		

Arts EDUCATION

HETTENHAUSEN CENTER FOR THE ARTS

Arts Education at the Hett

Arts Education builds appreciation, participation and support for arts and arts education throughout the St. Louis community. Please visit page 14 for more information on our Arts Education series.

Step 6 Ticket Payment Information

Name:

☐ Visa ☐ Mastercard ☐ Discover ☐ AMEX

Credit card billing address (if different from Step 1)

Card #:

Expiration Date:

Cardholder's signature:

Single Event Tickets Total (from above chart)	\$ _____
Friend of the Hett contribution	\$ _____
Handling	\$ 2.00
GRAND TOTAL	\$ _____

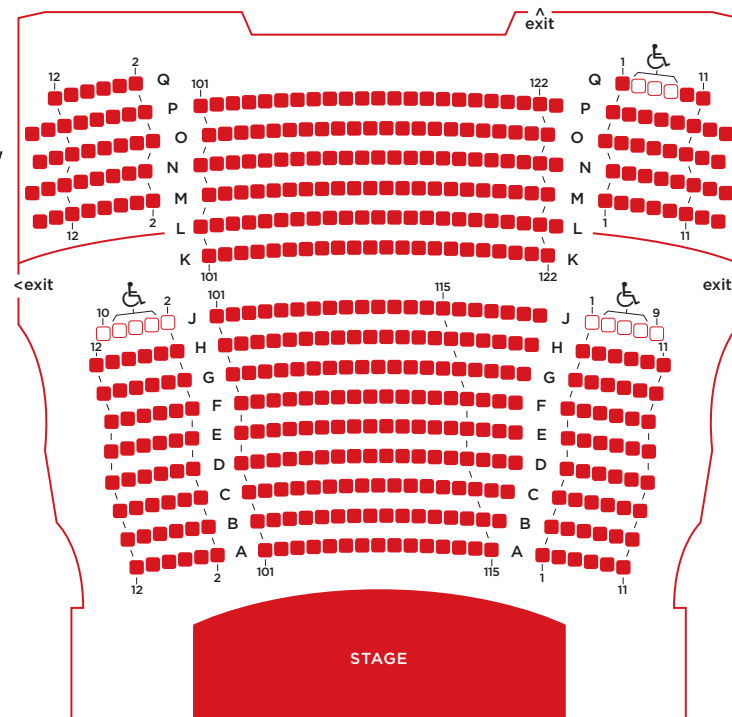
Step 7 Mail in Order Form

Send this Entire Form and All Payments to:  
The Hettenhausen Center for the Arts c/o McKendree University  
701 College Road, Lebanon, IL 62254



# Seating & Information

## Hett Center Seating



### Box Office

The box office is located in the main lobby of the Hett Center for the Arts, and will open for membership sales on Monday, July 2nd, 2018. It is open Monday through Friday from 12 pm-4:00 pm, plus one hour before scheduled performances. Special summer box office hours will be in effect for July and August, so please call ahead. Call (618) 537.6863 or visit [www.theHett.com](http://www.theHett.com) for ticket information.

### Directions

Directional maps are shown on pg. 40

### Cameras/Phones/Electronic Devices

Please silence your electronic devices. No flash photography during performances, please.

### Food & Drink

No food is permitted in the auditorium. Please limit your beverages to covered water.

### Late Seating

Latecomers will be seated at the discretion of the house staff at an appropriate interval in the program. Fifteen minutes prior to the start of the program, any free ticket reservations will be released.

### Special Rates

All McKendree University students with a current student ID are eligible for a free ticket to any event. Student pricing refers to any form of learning: preschool, K-12, or another college. Seniors are age 60 or older.

### Special Accommodations

Please advise the box office staff prior to purchasing tickets if a guest requires

accommodations. The Hett offers a wheelchair seating area, transfer seats with removable arms, an elevator, and hearing assistance devices.

### Refunds/Exchanges

Tickets are nonrefundable unless the event is cancelled, and programs are subject to change without notice. Exchanges are permissible for Friends of the Hett donors to an event within the same season. Tickets may be donated 48 hours before a performance to be given to McKendree University students.

### Ticket Dates and Policy

Friends of the Hett tickets on sale Monday, July 2nd at 12 pm. Faculty/Staff/McKendree students' tickets on sale Tuesday, August 23rd at 12 pm. General public ticket sales August 29th at 12 pm. All orders are filled

on a first-come, first-served basis. Membership begins at \$100 and allows for early ticket purchasing and exchanges. All persons, regardless of age, must have a ticket.

A portion of all ticket revenue is automatically allocated to preserve the beauty and function of the Hett in its capital improvement fund.

### Ticket Orders

**Mail:** The Hett Center for the Arts, McKendree University, 701 College Road, Lebanon, IL 62254.

### Online:

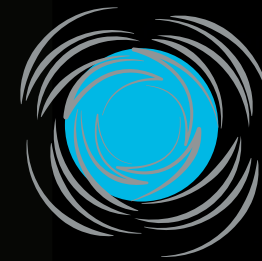
[www.theHett.com](http://www.theHett.com)

### Box Office:

Phone: 618.537.6863  
Fax: 618.537.6570

### Social Media

Follow us on Facebook, Instagram and Twitter for up-to-the-minute information and special promotions.



THIRD:COAST  
PERCUSSION

**"Sonically spectacular!"**

The Chicago Tribune

This Grammy-winning quartet has forged a unique musical path with virtuosic, energetic performances that celebrate the extraordinary depth and breadth of possibilities in the world of percussion. Hailing from Chicago, the members are also accomplished teachers and the ensemble-in-residence at the University of Notre Dame since 2012.

A direct connection with the audience is at the core of their work, whether they are speaking from the stage about a new piece of music; encouraging the audience to play along; or inviting fans around the world to create new music using one of their free mobile apps.

Their curiosity and eclectic taste have led to unlikely collaborations that have produced exciting new art. The group has worked with engineers at the University of Notre Dame, architects at the Frank Lloyd Wright Foundation, dancers at Hubbard Street Dance Chicago, and musicians from traditions ranging from the mbira music of Zimbabwe's Shona people, to indie rockers, to some of the world's leading concert musicians.

Generously supported by:

Mr. George  
Obernagel '78

**"Vibrant...  
superb."**

The New Yorker

Third Coast  
Percussion

Thursday, Feb. 28, 2019  
7:30 PM

\$20 adult, \$18 senior,  
\$10 student/child

McKendree University students  
FREE

School Matinée:  
Think Outside  
the Drum

Wednesday, Feb. 27, 2019  
10:00 AM

\$5 child; for every 10 children,  
one FREE ticket for chaperone  
See page 14 for more information.



Please support our advertisers —  
they help make The Hett *Great!*

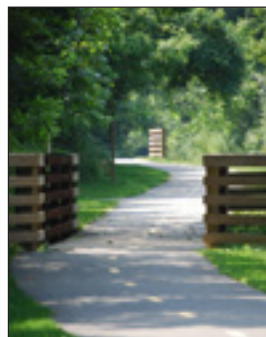


# THE TOTAL SOLUTION FOR YOUR OFFICE

- Printers & Multifunction Systems
- Managed Print Services
- Managed Network Services
- Pure Water Systems
- Document Management
- Office Supplies



314-442-2800 | [www.da-com.com](http://www.da-com.com)



Proudly serving the community for over 70 years



EXCEPTIONAL SERVICE. NOTHING LESS.  
618.624.4488 • [twm-inc.com](http://twm-inc.com)

## MCKENDREE UNIVERSITY BOOKSTORE PROUDLY SUPPORTS THE ARTS!

MCKENDREE UNIVERSITY BOOKSTORE  
The Best Place to be a Bearcat  
701 College Road  
618.537.6330 | [McKendreeShop.com](http://McKendreeShop.com)

# CIRQUE ÉLOIZE SALOON

Generously supported by:

Betty H. Ford  
and the late Col.  
William Ford

Corporate sponsor:



## Cirque Éloize: Saloon

Wednesday, March 6, 2019  
7:30 PM

\$32 adult, \$30 senior,  
\$10 student/child

McKendree University students **FREE**

**Imagine this: America is expanding. The railroad is snaking westward. In the desert, a town comes to life.** The saloon doors swing open to reveal a motley cast of characters, each with a tale to tell.

Theatre and circus collide in **Saloon**, Cirque Éloize's 11th original creation, inspired by a rich historical and musical heritage. The music of Patsy Cline and Johnny Cash mix with festive, folk-inspired compositions as a fiddle sets the tone for a musical adventure that sweeps the audience up in a flurry of energy. Strength, agility, original choreography and spectacular acrobatic prowess combine for an action-packed thrill ride! The Korean plank, aerial straps, Cyr wheel, juggling, hand-to-hand, and a variety of movements tell an incredible love story of the Wild West, where almost anything goes. Never before has a piano tuner created such a ruckus!

Éloize (pronounced "el-WAZ") means "heat lightning" in the Acadian dialect of the Îles-de-la Madeleine, or Magdalen Islands, an archipelago in the Gulf of St. Lawrence, southeast of Québec. Artists from the first Cirque Éloize, started in 1993, were from these islands.





Please support our advertisers —  
they help make **The Hett Great!**



**BRiC**  
PARTNERSHIP, LLC  
CONSULTING ENGINEERS

BRiC Partnership, LLC exists to provide the highest quality **Mechanical, Electrical, Plumbing, Fire Protection, Information Technology Systems Design, & Commissioning services** to our clientele.  
Give us a call at 618.277.5200

BELLEVILLE, IL | SPRINGFIELD, IL | KIRKWOOD, MO | EVANSVILLE, IN



**Farmers & Merchants National Bank**

**Lebanon Banking Center**

**102 Wakanda Drive 537-2000**

*\*Your Hometown, Community Bank\**

**Mascoutah Banking Center**

**832 N. Jefferson St. 566-3333**

**www.bankwithfmb.com**

*Local People.  
Local Decisions.  
Local Bank*



**Where do you find the Largest list of commercial and industrial properties available in Southern Illinois?**

- A. barbermurphy.com
- B. barbermurphy.com
- C. barbermurphy.com
- D. All of the above

**BARBERMurphy**  
GROUP

**WE'RE ALL ABOUT SOUTHERN ILLINOIS**  
COMMERCIAL • INDUSTRIAL • INVESTMENT PROPERTIES

1173 Fortune Blvd., Shiloh, Illinois 62269  
618.277.4400 • barbermurphy.com

  
the idea lab

**McCammon Distinguished  
Speaker Series**  
Presents

**Intellectually  
engaging**

**Thought  
provoking**



**the idea lab**  
*is back!*

After a successful debut in 2016, the idea lab returns with five more fascinating, informative talks on one memorable night! Speakers will be announced in 2019; visit **theHett.com** for details.

*the idea lab*

**Tuesday, March 19, 2019  
7:30 PM**

**\$5 general admission seating**

McKendree University faculty/  
staff/students **FREE**



Please support our advertisers –  
they help make **The Hett Great!**



Your retirement questions deserve more than just a call center.

Let me show you the difference personal attention can make when it comes to your goals.

Personal attention is how Edward Jones makes sense of investing.



**Paul D Jansen**  
Financial Advisor  
108 West St Louis Street  
Lebanon, IL 62254  
618-537-6772

[www.edwardjones.com](http://www.edwardjones.com)  
Member SIPC

**Edward Jones**  
MAKING SENSE OF INVESTING

MKT-8275B-A-AD



**Be proud. Bank local.  
#TeamKasasa**

Free Kasasa® checking lets you earn better-than-bigbank rewards. But you don't have to go to a big bank to get it.



[myGCScu.com](http://myGCScu.com)



Federally insured by NCUA. Account approval, qualifications, limits, and other requirements apply. See GCS Credit Union for details.

**We Are More Than  
The Fountain...  
Historic  
Downtown Belleville**

Learn more about our

- Retailers,
- Restaurants,
- Events,
- Farmers' Market,
- And promotions

at

**BellevilleMainStreet.net**  
Or "like" us on Facebook!



Sponsored by Belleville Main Street



# tenThing

**tenThing**

**Monday, April 8, 2019  
7:30 PM**

**\$20 adult, \$18 senior,  
\$10 student/child**

McKendree University students  
**FREE**

**"A superstar of tomorrow."**

*BBC Music Magazine*

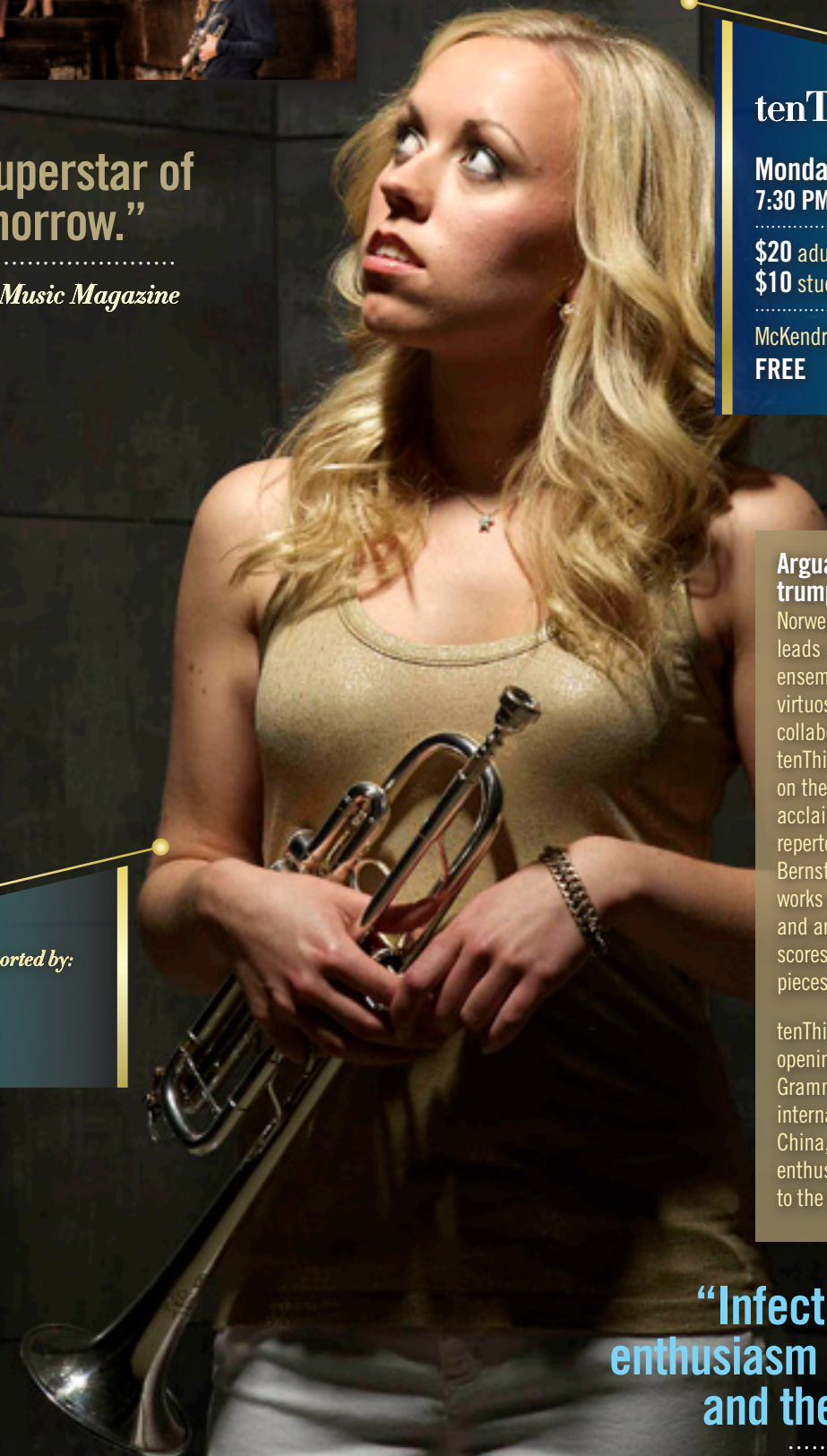
*Generously supported by:*  
**Together  
Wee Grow**

Arguably the finest female trumpet player in the world, Norwegian soloist **Tine Thing Helseth** leads a 10-piece, all-female brass ensemble that is equal parts virtuosity and fun. Formed in 2007 as a collaboration between musical friends, tenThing has firmly established itself on the international scene to great acclaim. The ensemble's diverse repertoire spans Mozart to Weill, Grieg to Bernstein, and Lully to Bartok. The group works closely with Norwegian guitarist and arranger Jarle Storl kken on scores that enable the ensemble to play pieces of differing instrumentations.

tenThing delighted the audience with an opening number at the 2011 Norwegian Grammy Awards. It has performed at international festival plays in Germany, China, and Italy, and contributed an enthusiastically acclaimed performance to the BBC Chamber Proms series.

**"Infectious in their enthusiasm and energy, and their intimacy,"**

*The Guardian, U.K.*





Please support our advertisers –  
they help make The Hett *Great!*



**The St. Louis Brass Band**  
British Brass ... Spirit of St. Louis  
Dr. John Bell, Conductor



US Open Brass Band Championships Reserve Champion!

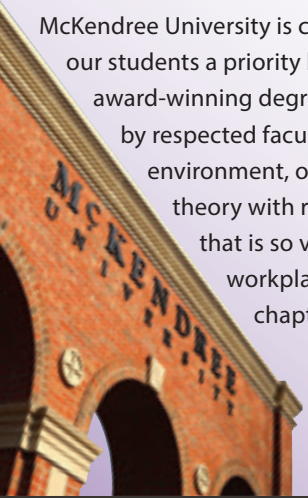
2018-2019 Concert Schedule: [www.stlbb.org](http://www.stlbb.org)

Facebook: St. Louis Brass Band  
Twitter: @stlbrassband

**MCKENDREE**  
UNIVERSITY

# Continue Your Story

McKendree University is committed to making our students a priority by offering top-notch, award-winning degree programs. Taught by respected faculty in a supportive environment, our classes balance theory with real-world application that is so valuable in the workplace. Start your next chapter today!



[McKendree.edu](http://McKendree.edu)

UNDERGRADUATE • GRADUATE • ONLINE  
MAKE YOUR MARK



## Protect your family. Prepare for their future.

Jessica Zurlene, Agent  
114 Wakanda Drive Suite B  
Lebanon, IL 62254  
Bus: 618-537-4441  
[www.insurewithjess.com](http://www.insurewithjess.com)

I can help with both.  
Stop by for your free State Farm Insurance and Financial Review®.  
**Like a good neighbor, State Farm is there.®**  
CALL ME TODAY FOR MORE INFORMATION.



1001386.2 State Farm, Home Office, Bloomington, IL

## Christ Truck Service, Inc.

### Trucking & Excavating Since 1936

<b>Driveway Rocks</b>	<b>Yard Grading</b>
<b>Decorative Gravels</b>	<b>Backhoe &amp;</b>
<b>Sands / Mulch</b>	<b>Skid Steer Services</b>
<b>Shredded Topsoil</b>	<b>Free Estimates</b>

Pick up or Delivery / 705 S. Fritz, Lebanon, IL

**(618) 537-2081**  
[christtruckserviceinc.com](http://christtruckserviceinc.com)



## Paul Taylor Dance Company

Wednesday, Apr. 17, 2019  
7:30 PM

\$26 adult, \$24 senior,  
\$10 student/child

McKendree University students  
**FREE**

Generously supported by:  
**Mr. Randy Wells**

# PAUL TAYLOR DANCE COMPANY

Eminent choreographer **Paul Taylor** has produced a breadth of work that displays his incredible talent, never shying away from subjects often ignored by the art form. A professional dancer and pioneering choreographer since 1954, he continues to shape America's indigenous art of modern dance. A performer with Martha Graham's company for several years, he uniquely bridges the legendary founders of modern dance—Isadora Duncan, Ruth St. Denis, Ted Shawn, Doris Humphrey and Ms. Graham—with 21st century dance makers.

Humorous and romantic, he continues to create pieces for his world-famous dance company and commissions works from a new generation of choreographers. His dance company has traveled the globe many times over, performing an ever-growing body of work. Through a new initiative at the Lincoln Center—Paul Taylor Modern American Dance—great modern works of the past and outstanding works by today's leading choreographers are presented along with the Taylor Company's own vast repertoire.





# NATIONAL GEOGRAPHIC *LIVE!*

Presented by the  
McCammon Distinguished  
Speaker Series

Each speaker: \$20 adult, \$18 senior, \$10 student/child, McKendree University students FREE

Special package: all three speakers—\$50 adult/senior

Kobie Boykins,  
NASA Engineer:

*Exploring Mars*

Sept. 14  
7:30 p.m.

COURTESY NASA-JPL-CALTECH

Steve Winter,  
Wildlife Photographer:

*On the Trail of the Big Cats*

Oct. 17  
7:30 p.m.

STEVE WINTER

Dr. Kara Cooney,  
Egyptologist:

*When Women Ruled the World*

Jan. 23  
7:30 p.m.

FERNANDO G. BAPTISTA

Friday, **September 14, 2018**, 7:30 PM

A dynamic young engineer at NASA's Jet Propulsion Laboratory, **Kobie Boykins** is on the front line of Mars exploration. As supervisor of the mobility and remote sensing teams for the rover Curiosity, he has monitored headline-making studies, including proof of the former presence of water on Mars, indicating that the planet could have supported life. Boykins will recount the challenges and triumphs of the Mars exploration rover missions, sharing remarkable images and discoveries that continue to come to us from the Red Planet.

Boykins designed the solar arrays that power the Mars exploration rovers, Spirit and Opportunity. Landing on Mars on January 25, 2004, Opportunity was designed to survive a mission lasting approximately 90 days. Remarkably, the rover continues to traverse the surface of Mars to this day, sending back valuable scientific data. Boykins also was responsible for the design of actuators on Curiosity, the Mars Science Laboratory, which landed safely on Mars in 2012.



Courtesy NASA-JPL-Caltech

Wednesday, **October 17, 2018**, 7:30 PM

Wildlife photographer **Steve Winter** has spent more than 20 years leading photographic expeditions to remote locations around the world on a mission to save big cats.

Winter's father gave him his first camera at age seven—and there was no turning back. He eventually graduated from the Academy of Art and the University of San Francisco, and became a photojournalist for Black Star Photo Agency. He has produced stories for *GEO*, *Time*, *Newsweek*, *Fortune*, *Natural History*, *Audubon*, *BusinessWeek* and *Scientific American*, and published more than 30 articles and two books with *National Geographic*. He is best known for his photography and conservation efforts involving jaguars, cougars, leopards, snow leopards, and—the most critically endangered of all—tigers.

His dedication to the protection of these iconic animals has made Winter a cornerstone of the National Geographic Big Cats Initiative, a long-term commitment to stop poaching, preserve habitats, and support education to halt extinction. In 2013, National Geographic published his photography book, *Tigers Forever: Saving the World's Most Endangered Cat*. He lectures globally on photography and conservation issues and has appeared on *CBS Nightly News*, *60 Minutes*, *NPR*, *BBC*, and *CNN*.



Courtesy Sharon Guynap

Wednesday, **January 23, 2019**, 7:30 PM

**Dr. Kara Cooney**, professor of Egyptology, examines a time in ancient history when women ruled the world. Often neglected in the history books, these women were exceptions to the rule, political pawns in a patriarchal society, yet their power and influence is undeniable. Cleopatra used her sexuality—and her money—to build alliances with warlords of the Roman Empire. Neferusobek was the first woman to take definitively the title of king. Nefertiti is known more for her beauty than for bringing a fractured Egypt together. What can we learn from how they ruled?

Dr. Cooney is a professor of Egyptian art and architecture at UCLA. Specializing in craft production, coffin studies, and economies in the ancient world, she received her Ph.D. in Egyptology from Johns Hopkins University. In 2005, she was co-curator of "Tutankhamun and the Golden Age of the Pharaohs" at the Los Angeles County Museum of Art.



Courtesy Marissa Stevens



Please support our advertisers —  
they help make **The Hett Great!**

**Worship**  
Every Sunday  
9:30 AM



**Sunday School**  
Every Sunday  
11:00 AM

603 W. Saint Louis St.  
Lebanon, IL 62254  
(618) 537-6622

Come! Visit us,  
and worship our  
Lord together.

We have many  
ministry areas  
in which you  
can participate.



**Come Out and Support One of Our  
32 Athletic Programs...  
SEE YOU IN THE STANDS!**

[www.McKBearcats.com](http://www.McKBearcats.com)  
[Facebook.com/McKBearcats](https://www.facebook.com/McKBearcats) [Twitter: @McKBearcats](https://twitter.com/McKBearcats)  
[#BearcatsUnleashed](https://www.instagram.com/McKBearcats)



**Wolfersberger  
Funeral Home**

Cremation Services • Funeral Services  
Advanced Planning



Jim and Kim Sabella

102 West Washington St.  
O'Fallon, Illinois 62269  
618-632-3681  
[www.wfh-ofallon.com](http://www.wfh-ofallon.com)

*Veteran Family Owned & Operated*

**Tiadaghton House**



Art, Antiques & American Craft

**75 Local Artists**

- ACRYLICS & OILS
- WATERCOLORS
- MIXED MEDIA
- POTTERY
- JEWELRY
- FIBER ART
- ANTIQUES
- STICKLEY FURNITURE

OFFERING CLASSES:  
PAINTING  
MIXED MEDIA  
POTTERY  
SOAP MAKING

111 W. St. Louis St., Lebanon, IL  
[www.TiaHouse.com](http://www.TiaHouse.com)

## Film Art Series

Some films contain adult  
themes or language and  
may not be appropriate  
for everyone.

7:00 PM

FREE

Generously supported by the:

**The Leon and  
Helen Church  
Family Foundation**



**Ex Machina** (2014)  
Thursday, Oct. 11, 2018

A young programmer participates in  
a groundbreaking experiment in  
synthetic intelligence by evaluating  
the human qualities of a  
breath-taking humanoid A.I.

Rated R; 1 hour, 48 min.



**Throne of Blood** (1957)  
Wednesday, Dec. 5, 2018

A war-hardened general, egged on by  
his ambitious wife, works to fulfill a  
prophecy that he would become  
lord of Spider's Web Castle. Directed  
by Akira Kurosawa.

Not rated; 1 hour, 50 min.

*Film Art Series*



**I, Tonya** (2017)  
Wednesday, Sept. 26, 2018

The story of competitive ice skater  
Tonya Harding, who rose among the  
U.S. figure skating ranks but whose  
future was thrown into doubt when her  
ex-husband intervened.

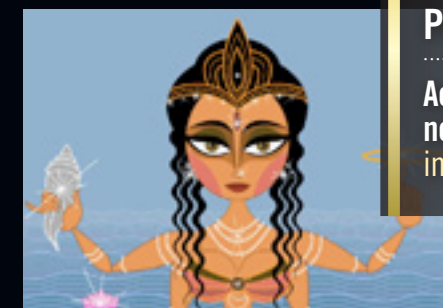
Rated R; 2 hours.



**The Florida Project** (2017)  
Monday, Nov. 26, 2018

Precocious six-year-old Moonee  
courts mischief and adventure with her  
ragtag playmates and bonds with her  
rebellious but caring mother, while living  
in the shadows of Walt Disney World.

Rated R; 1 hour, 51 min.



**Sita Sings the Blues** (2008)  
Thursday, Mar. 21, 2019

An animated version of the  
epic Indian tale of Ramayana  
set to the 1920s jazz vocals  
of Annette Hanshaw.

Not rated; 1 hour, 22 min.

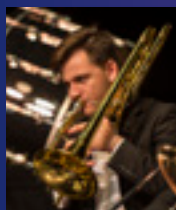
**PLUS**

Academy Award  
nominees early  
in 2019



# Explore the *Visual and Performing Arts* at McKendree

The Hett provides McKendree University students a state-of-the-art performance venue in which to nurture and display their many talents. The University offers majors in music, music education, music marketing, art, theatre and musical theatre, with minors in art, dance, music and theatre. Students benefit from small class sizes, one-on-one guidance, experienced faculty, master classes, scholarship opportunities, and unique internships.



## Music

Music majors develop their skills as they prepare for careers in music performance, education, church music, theatre or other opportunities in the arts. Students of all disciplines are welcome to take music classes and participate in various ensembles.

- **Dr. Nancy S. Ypma**, Professor of Music; Chair, Division of Visual and Performing Arts
- **Dr. Jennifer Moder**, Assistant Professor of Music Education; Director of the Concert Band and Wind Ensemble
- **Dr. John McDonald**, Assistant Professor of Music Education; Director of the Concert Choir and Show Choir



## Theatre

See amazing, innovative shows staged by student actors, designers, and technicians! From entertaining comedies to thought-provoking dramas, from classics to original works, students demonstrate their skills in acting, set construction, sound, and lighting design.

- **Michelle Magnussen**, Associate Professor of Theatre



## Art

Students express their creativity through ceramics, drawing, graphic design, painting, digital media, photography, printmaking and sculpture. The McKendree University Gallery of Art, at 224 St. Louis St. in downtown Lebanon, displays original works by students, faculty members, and visiting artists. Exhibits and receptions are free and open to the public.

- **Amy MacLennan**, Associate Professor of Art; Director, McKendree University Gallery of Art
- **Kevin Kao**, Assistant Professor of Art



## Performance Groups

- Concert Band
- Wind Ensemble
- Concert Choir
- Chamber Choir
- Jazz Ensemble and Jazz Combo
- Vocal a cappella
- Chamber Ensembles for woodwinds, brass and percussion



## Show Choir

Vocals, choreography, staging, costuming and production combine for an entertaining, energetic performance of songs in a variety of genres, from pop to gospel to Broadway.

**Dr. John McDonald**, Show Choir Director



## Marching Bearcat Band

The band performs at all home football games, hosts the annual "Preview of Champions" Marching Band Competition, and sponsors Drum Corps International's "DCI St. Louis" show.

- **David Boggs**, Director of Athletic Bands

Please visit [www.theHett.com/](http://www.theHett.com/) student-performances for more information.

# The *McKendree University Series!*

Student and faculty performances present the best of **McKendree University** talent! Admission is free (no ticket required) unless otherwise noted. Dates and times are subject to change; visit [theHett.com](http://theHett.com) for up-to-date information.



## October

- **Faculty Recital**  
Thursday, **October 4**, 2018, 7:30 PM
- **Potpourri Concert**  
Monday, **October 8**, 2018, 6:00 PM
- **Choral Festival**  
Monday, **October 15**, 2018, 7:30 PM



## November

- **Legally Blonde: The Musical**  
Harvard's beloved blonde takes the stage by pink storm in this fun, upbeat story of self-discovery.  
Thursday, **November 8** to Saturday, **November 10**, 2018, 7:30 PM  
Sunday, **November 11**, 2018, 2:00 PM
- **Marching Bearcat Band Concert**  
Friday, **November 16**, 2018, 7:30 PM
- **Concert Band Concert**  
Monday, **November 19**, 2018, 7:30 PM
- **Dance Recital**  
Wednesday, **November 28**, 2018, 7:30 PM
- **Chamber Ensembles Concert**  
Thursday, **November 29**, 2018, 7:30 PM



## December

- **Jazz Ensemble Concert**  
Monday, **December 3**, 2018, 7:30 PM
- **A McKendree Christmas!**  
Featuring the Concert Band, Concert Choir, Chamber Choir, Jazz and Wind Ensembles, Show Choir, Dance Ensemble, Theatre Department, and a student art exhibit.  
Friday, **December 7**, 2018, 7:30 PM



## April

- **Theatre Department Play: Dead Man's Cell Phone** by Sarah Ruhl  
Thursday, **April 4** to Saturday, **April 6**, 2019, 7:30 PM and Sunday, **April 7**, 2019, 2:00 PM
- **Dance Recital**  
Thursday, **April 25**, 2019, 7:30 PM
- **Choral Concert**  
Friday, **April 26**, 2019, 7:30 PM
- **Jazz Ensemble Concert**  
Monday, **April 29**, 2019, 5:00 PM
- **Chamber Ensembles Concert**  
Tuesday, **April 30**, 2019, 7:30 PM



## May

- **Concert Band Concert**  
Friday, **May 3**, 2019, 7:30 PM
- **Show Choir Finale This is Me**  
FREE, tickets required  
Saturday, **May 4**, 2019, 7:30 PM

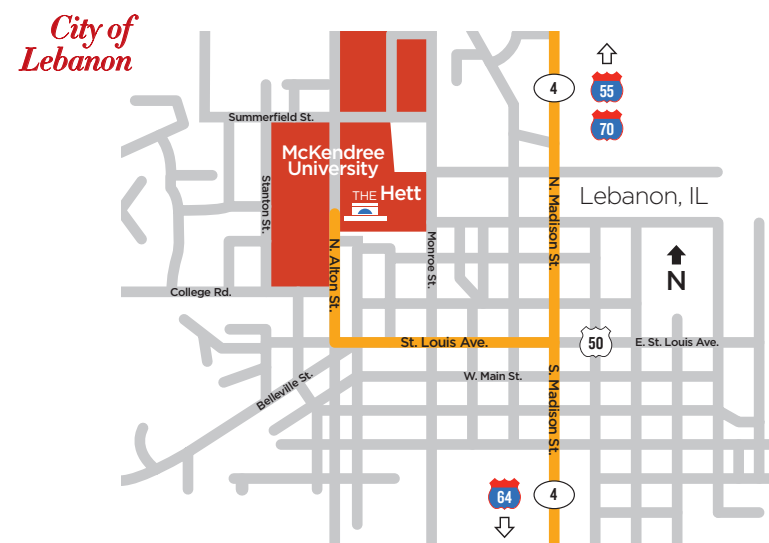


## theHett.com

Visit the Hett.com/Upcoming Events/Student Performances for the latest dates and times for student performances and special concerts to be announced throughout the year!



## Directions & Parking



### THE HETTENHAUSEN CENTER FOR THE ARTS

The Hett is located in Lebanon, Illinois on the picturesque campus of McKendree University at 400 N. Alton, Lebanon, IL 62254.

### MCKENDREE UNIVERSITY

McKendree University is conveniently located along Route 4, a mere 25 minutes from downtown St. Louis, Missouri and easily accessed from interstate highways 55, 57, 64 and 70.

### PARKING & VALET DIRECTIONS

Parking is free on the McKendree campus and theater patrons can park for free in the lot adjacent to the Hett. Valet is available for select performances. Visit our website for details—theHett.com

### ADDITIONAL DIRECTIONS

Complete driving directions are available on the McKendree University website, [www.mckendree.edu](http://www.mckendree.edu), in the "About McKendree" section.

## Purchasing Tickets

*Space is limited, so don't miss your chance to experience the eclectic blend of fine arts performances and distinguished speakers on the historic campus of McKendree University!*

FRIENDS OF THE HETT TICKETS ON SALE **Monday, July 2, 2018, 12:00 pm**  
By mail, phone or in person.

GENERAL PUBLIC TICKETS ON SALE **Wednesday, August 29, 2018, 12:00 pm**  
By phone, in person or online.

BUY ONLINE - SECURE & CONVENIENT [www.theHett.com](http://www.theHett.com)

BOX OFFICE INFORMATION AND TO BECOME A "FRIEND"  
Hours: 12-4 p.m. Monday-Friday  
Phone: 618.537.6863  
[thehett@mckendree.edu](mailto:thehett@mckendree.edu)

PLEASE NOTE for free performances only  
Reserved seating is not available for free events, however, reservations are requested.  
The box office will open 60 minutes prior to all free events.  
Unclaimed reservations will be released 15 minutes prior to the event.

### How ticket orders *are filled*:

JUNE	JULY 2	AUGUST	AUGUST 29
<i>Friends of the Hett</i> * receive season schedule and have first choice of tickets.	<i>Friends</i> orders will be filled by mail or phone.  Tickets are sold to <i>Friends</i> only at this time. Some shows may sell out.	General public receives season schedule.	Phone, in person and online orders filled beginning at noon.  *Visit <a href="http://www.theHett.com">www.theHett.com</a> today to become a <i>Friend of the Hett</i>



# Special thanks to our *2017-2018 Friends of the Hett!*

Listing reflects gifts made to McKendree Presents between January 1 - December 31, 2017

## Director's Circle

Anonymous  
Arts and Education Council  
Arts Midwest  
.....  
Dr. Linda Cassens  
Brig. General David M. Cornell, USAF, Ret. and Mrs. Lynette Cornell  
Country Financial  
.....  
Dr. James M. Dennis and Dr. Cynthia Dennis Cherrey  
.....  
Mr. William J. Eckert and Mrs. Janet W. Eckert '89  
Mr. John Ernst\* and Mrs. Barbara Ernst  
.....  
Mrs. Betty H. Ford and the late Col. William Ford  
.....  
Mr. Michael F. Gauble '66 and Mrs. Kay Gauble '66  
George E. McCammon Memorial Endowment  
Dr. Betsy Gordon  
.....  
Dr. Delbert L. Harris and Mrs. Mary J. Metzger-Harris '62  
Mr. Vernon E. Henley '76 and Mrs. Mary A. Henley  
.....  
Illinois Arts Council  
.....  
Mathis, Marifian, & Richter, LTD.  
Monsanto Rural Community Arts Education Fund  
.....  
Mr. George W. Obernagel III '78  
.....  
Mr. Peter J. Palermo and Mrs. Sarah S. Palermo  
Doug Phillips and Associates  
Ms. Janelle Phillips  
.....  
TheBANK of Edwardsville  
.....  
Dr. Frank Spreng\* and Mrs. Jane Spreng  
.....

## Star

Mr. Randy Wells  
.....  
Mr. Albert F. Allen '66 and Mrs. Catherine Allen '66  
.....  
Mrs. Cheryl Brewer  
.....  
Mr. Harrison Church and Mrs. Harriet Church  
Leon and Helen Church Family Foundation  
Mr. Gerald E. Cornell '74 and Mrs. Sharon Cornell  
Ms. Elizabeth A. Crabtree  
Dr. Cyril D. Curtis '43  
.....  
Mr. Woody L. Derickson '60 and Mrs. Gail Derickson  
.....  
Rev. Robert H. Edwards '57 and Mrs. Linda S. Edwards  
.....  
Fidelity Charitable Gift Fund  
Dr. Paul S. Funkhouser '70 and Mrs. Carol J. Funkhouser '79  
.....  
Heil Sound  
Hilton Garden Inn and Regency Conference Center  
Mrs. Mary Houchin  
.....  
Mr. Anthony Jackovich and Mrs. Tina Jackovich  
.....  
Ms. Megan E. Jackson '16  
Mr. Darnall Jones and Mrs. Kimberly Jones  
.....  
Dr. Philip E. Kahlert and Mrs. Mary Jo Kahlert  
.....  
Mr. Salvatore Macaluso and Mrs. Eva Macaluso  
.....  
Mr. Clark Main and Mrs. Ardyce F. Main  
Mr. Darryl Mayhew and Mrs. Sally A. Mayhew, MBA '07  
.....  
Mr. Edward R. McGlynn '68 and Mrs. Jeanne K. McGlynn '70  
.....  
Mr. Donald L. Metzger and Mrs. Marlene Metzger  
Dr. Paul S. Meyer\* and Mrs. Madreen H. Meyer

Mr. Jerry Miller and Mrs. Marietta L. Miller '95  
Mr. Paul K. Mueth '59 and Mrs. Shirley Mueth  
.....  
Mr. Ronald Obernier '85 and Mrs. Lynda Obernier  
.....  
Col. Robert Parrish, USAF, Ret. and Mrs. Anne Parrish  
Mr. David R. Philip '70 and Mrs. Mary Philip '66  
.....  
Mrs. Martha E. Roy '67  
.....  
Mrs. Shirley Schaefer '60  
State Farm Companies Foundation  
.....  
Mrs. Joseph J. Cipfl and Mrs. Linda Cipfl  
Ms. Marlene C. Cummins '55  
.....  
Mr. Paul Demay and Ms. Kate Godfrey-Demay  
.....  
Mrs. Donna Dosier '56  
Ms. Victoria A. Dowling  
.....  
Mrs. Sylvia Korte Fertig '63  
.....  
Mr. Edward A. Graves '73 and Mrs. Gay Graves  
Mr. Roy E. Gray and Mrs. Renate Gray  
.....  
Mr. Robert J. Hillebrand and Mrs. Joyce W. Hillebrand  
Mr. R. Bruce Hogan '71 and Dr. Dyanne J. Ferk  
Mrs. Jeanette Hoyt '54  
.....  
Mr. Bob Kerin and Mrs. Janice M. Kerin  
.....  
Mr. Dave Klingensmith and Mrs. Cindy Klingensmith  
Mrs. Bobbie Knaus  
Mrs. Kay Koller  
.....  
Mrs. Alice LaRue  
.....  
Mr. Robert McCammon  
Ms. Vanessa Miller  
.....  
Mr. Gary R. Mueller and Mrs. Bonnie G. Mueller  
.....  
Mr. Joseph J. Palas and Mrs. Diane Palas  
Rev. Dr. Miley E. Palmer '58 and Mrs. Janet Palmer

## Benefactor

Ameren Corporation  
.....  
Bank of America Foundation  
Mrs. Joan Barnes '53  
Ms. Judith E. Beasley '69  
.....  
Mrs. Patricia A. Dorries  
.....  
Mr. Robert Frost and Mrs. Helen Frost  
.....  
Rev. Dowain V. McKiou '55  
Mr. Richard F. Montague and Mrs. Judith K. Montague  
.....  
Mr. Frederic K. Robinson '68 and Mrs. Betty Gerth-Robinson  
.....  
Mr. Mark D. Waltermire and Mrs. Pamela S. Waltermire  
Mrs. Evelyn S. Wright  
.....

\*denotes deceased

## Patron

Ms. Carolyn K. Andrew  
Anonymous  
.....  
Dr. Michael W. Bahr and Dr. Christine M. Bahr  
Mr. Charles F. Baker and Mrs. Harriet Baker  
Mr. Bill Blythe '63 and Mrs. Patricia Blythe '63  
Dr. William R. Bonsall and Mrs. Mary McCuddy-Bonsall  
Ms. Karen J. Braatz  
.....  
Dr. Joseph J. Cipfl and Mrs. Linda Cipfl  
Ms. Marlene C. Cummins '55  
.....  
Mr. Paul Demay and Ms. Kate Godfrey-Demay  
.....

Mrs. Donna Dosier '56  
Ms. Victoria A. Dowling  
.....  
Mrs. Sylvia Korte Fertig '63  
.....  
Mr. Edward A. Graves '73 and Mrs. Gay Graves  
Mr. Roy E. Gray and Mrs. Renate Gray  
.....  
Mr. Robert J. Hillebrand and Mrs. Joyce W. Hillebrand  
Mr. R. Bruce Hogan '71 and Dr. Dyanne J. Ferk  
Mrs. Jeanette Hoyt '54  
.....

Mr. Bob Kerin and Mrs. Janice M. Kerin  
.....  
Mr. Dave Klingensmith and Mrs. Cindy Klingensmith  
Mrs. Bobbie Knaus  
Mrs. Kay Koller  
.....  
Mrs. Alice LaRue  
.....  
Mr. Robert McCammon  
Ms. Vanessa Miller  
.....  
Mr. Gary R. Mueller and Mrs. Bonnie G. Mueller  
.....  
Mr. Joseph J. Palas and Mrs. Diane Palas  
Rev. Dr. Miley E. Palmer '58 and Mrs. Janet Palmer

Mr. Anthony Ptacek and Mrs. Kathleen Ptacek  
.....  
Mr. Efrem Rivers  
.....  
Mr. Michael E. Suwe and Mrs. Michele Suwe  
.....  
Dr. Valerie L. Thaxton '76  
.....  
Dr. John S. Watters and Mrs. Anne M. Watters  
Mr. Frank C. Wojcik and Mrs. Judith L. Herrin Wojcik '70  
.....  
Mr. Dale Yonker  
.....

## Supporter

Mr. Dennis L. Alford and Mrs. Deborah L. Alford  
Col. Francis J. Almeter, Ret. and Mrs. Diane Almeter  
Anonymous  
Lt. Col. Richard Anshus, USAF, Ret. and Mrs. Sylvia Anshus  
Mr. Donald Astor and Mrs. Marlene Astor  
Mr. Duane Atchley  
.....  
Mr. Randall K. Baer '72 and Mrs. Diane Baer '72  
Ms. Nancy Baldus  
Ms. Sharon Barber  
Mr. Frederick W. Bartelsmeyer and Mrs. Carol Bartelsmeyer  
Mr. Brian Bass  
Dr. Joni J. Bastian  
Mr. Charles M. Baughman and Mrs. Margaret Baughman  
Mr. Ronald J. Becherer and Mrs. Sandra S. Becherer  
Mr. J. Mike Bennett and Mrs. Carol A. Bennett  
Mr. Allen Berberich and Mrs. Arleen E. Berberich  
Ms. Marian Beyer  
Mr. Scott L. Billhartz '85 and Mrs. Margaret A. Billhartz, MAED '08  
Boeing Company  
Mr. Michael Bosick and Mrs. Judy Bosick  
Dr. Murella A. Bosse

Dr. Brenda Boudreau  
Mrs. Janet Bradley  
Mr. Francis Brady and Mrs. Kathleen Brady  
Mrs. Janet Brichler  
Mr. David Britton and Mrs. Sandy Britton  
.....  
Mr. Michael Caponegro and Mrs. Mary Anne Caponegro  
Mr. Philip W. Chapman and Mrs. Melissa Chapman  
Mr. John Cheatham and Mrs. Carol Cheatham  
Mr. Gregg A. Clark and Mrs. Laura E. Clark  
.....  
Dr. Ann Collins  
Mr. James J. Connelly and Mrs. Lanah Connelly  
Mr. Shawn Connelly and Mrs. Krysti N. Connelly  
Dr. Loy Dale Cruse '55 and Mrs. Peggy Cruse '61  
.....

Mr. Gerald E. Daugherty and Mrs. Sylvia E. Daugherty  
Lt. Col. Joseph Daylor, USAF Ret. and Mrs. Mary Frances Daylor  
Mr. Dennis Dengler and Mrs. Rosalie Dengler  
Dr. Nichole DeWall and Mr. Brian Pezza  
Ms. Shirley Dickhaut  
Mr. Brian Dineen and Mrs. Cathy Dineen  
Mr. Daniel L. Diveney and Mrs. Diane J. Diveney  
Mr. Ron A. Dormer  
.....

Mr. Mike Eggleston and Dr. Tami Eggleston  
Dr. Gerald W. Ellis and Mrs. D. Jean Ellis  
Ms. Beth Elmore  
Mrs. Marilee Evans  
.....  
Ms. Carol Ferk  
Dr. George Fero and Dr. Marie Fero  
Ms. Janet Fillman  
Rev. William O. Frazier Jr. and Mrs. Nancy D. Frazier  
Ms. Carol Fritch  
.....  
Rev. Philip P. Gardner '58 and Mrs. Bonny K. Gardner '61

Mr. Daniel Gentry  
Ms. Marilyn Glasscock  
Dr. John Greenfield  
Dr. James F. Gregory and Mrs. Deanna M. Gregory  
Mr. Keith K. Grodeon and Mrs. Donna E. Grodeon  
.....  
Rev. Kim Hagedorn  
Dr. Darrel Hardt and Mrs. Leslie Hardt  
Mr. Robert W. Hardy '76 and Mrs. Bonnie Hardy  
Ms. Georgine Hawley '65  
Ms. Mary L. Heeren  
Mr. James Heil  
Mr. David E. Hemann and Mrs. Virginia M. Hemann  
Mrs. Dorothy A. Heuman '67  
Ms. JoAnn Hoelscher  
Mr. Larry F. Hofbauer '89 and Mrs. Gilda J. Hofbauer  
.....

Mr. Gerald E. Daugherty and Mrs. Sylvia E. Daugherty  
Lt. Col. Joseph Daylor, USAF Ret. and Mrs. Mary Frances Daylor  
Mr. Dennis Dengler and Mrs. Rosalie Dengler  
Dr. Nichole DeWall and Mr. Brian Pezza  
Ms. Shirley Dickhaut  
Mr. Brian Dineen and Mrs. Cathy Dineen  
Mr. Daniel L. Diveney and Mrs. Diane J. Diveney  
Mr. Ron A. Dormer  
.....

Mr. Charles W. Kamm '55 and Mrs. Lynne P. Kamm  
Ms. Melinda Kaye  
Ms. M. Janet Kelly  
Mr. Dale L. Klohr and Mrs. Carol S. Klohr  
Mr. Jack Klopmeier  
Mr. Edward H. Koch '56 and Mrs. Karen P. Koch  
Mr. Dennis L. Korte '70 and Mrs. Martha V. Korte '77  
Mr. Sylvester O. Korte Jr. '65 and Mrs. Kay E. Korte  
Mr. Richard Kosco  
.....  
Ms. Shirley Lodes '64  
Mr. Roger Lowery and Mrs. Elaine Lowery  
Mrs. Shirley J. Luber  
.....  
Mr. William E. Malina '58  
Mr. George J. Manning and Ms. Elizabeth Meinz  
Mr. Douglas Marti

Mr. Wayne E. McCollom and Mrs. Marie A. McCollom  
Mr. David McKay and Mrs. Mary McKay  
Mr. Michael J. McKeon and Mrs. Janet K. McKeon  
Ms. Stephanie L. McPeck  
Mr. Timothy L. Meeker '94 and Mrs. Melissa L. Meeker '93, Ed.D. '07  
Mr. Edward Miller  
Mr. Jack Mitchell and Mrs. Melissa Mitchell  
Mr. Kenneth M. Mitchell and Mrs. Kimberly E. Mitchell  
Mr. Roger W. Mitchell and Mrs. Patricia S. Mitchell  
Mr. Tom Molitor  
Mr. Dwight Moore and Mrs. Nona Moore  
Mr. Tim Moore and Mrs. Ellen Leaf-Moore  
Mr. Walter G. Mueggenburg and Mrs. I. Kay Mueggenburg '93  
.....

Mr. Gerald E. Daugherty and Mrs. Sylvia E. Daugherty  
Lt. Col. Joseph Daylor, USAF Ret. and Mrs. Mary Frances Daylor  
Mr. Dennis Dengler and Mrs. Rosalie Dengler  
Dr. Nichole DeWall and Mr. Brian Pezza  
Ms. Shirley Dickhaut  
Mr. Brian Dineen and Mrs. Cathy Dineen  
Mr. Daniel L. Diveney and Mrs. Diane J. Diveney  
Mr. Ron A. Dormer  
.....

Mr. Charles W. Kamm '55 and Mrs. Lynne P. Kamm  
Ms. Melinda Kaye  
Ms. M. Janet Kelly  
Mr. Dale L. Klohr and Mrs. Carol S. Klohr  
Mr. Jack Klopmeier  
Mr. Edward H. Koch '56 and Mrs. Karen P. Koch  
Mr. Dennis L. Korte '70 and Mrs. Martha V. Korte '77  
Mr. Sylvester O. Korte Jr. '65 and Mrs. Kay E. Korte  
Mr. Richard Kosco  
.....  
Ms. Shirley Lodes '64  
Mr. Roger Lowery and Mrs. Elaine Lowery  
Mrs. Shirley J. Luber  
.....  
Mr. William E. Malina '58  
Mr. George J. Manning and Ms. Elizabeth Meinz  
Mr. Douglas Marti

Mr. Ronald S. Randle and Mrs. Sherry L. Randle '98  
Mr. George Rau and Mrs. Nicolyn Rau  
Rev. Jerry L. Reed '67  
Ms. Ellen Reilly  
Mr. Jeffrey Rennegarbe and Dr. Richelle A. Rennegarbe '93  
Ms. Rita F. Renner  
Rev. James D. Rhea and Mrs. Bonnie Rhea  
Mr. A. Brent Richardson '65 and Mrs. Anna M. Richardson  
Dr. Jerry E. Ritchey and Mrs. Carol A. Ritchey  
Ms. Karen Ross  
Dr. Dennis P. Ryan and Mrs. Diane S. Ryan  
.....

Mr. Gerald E. Daugherty and Mrs. Sylvia E. Daugherty  
Lt. Col. Joseph Daylor, USAF Ret. and Mrs. Mary Frances Daylor  
Mr. Dennis Dengler and Mrs. Rosalie Dengler  
Dr. Nichole DeWall and Mr. Brian Pezza  
Ms. Shirley Dickhaut  
Mr. Brian Dineen and Mrs. Cathy Dineen  
Mr. Daniel L. Diveney and Mrs. Diane J. Diveney  
Mr. Ron A. Dormer  
.....

Mr. Charles W. Kamm '55 and Mrs. Lynne P. Kamm  
Ms. Melinda Kaye  
Ms. M. Janet Kelly  
Mr. Dale L. Klohr and Mrs. Carol S. Klohr  
Mr. Jack Klopmeier  
Mr. Edward H. Koch '56 and Mrs. Karen P. Koch  
Mr. Dennis L. Korte '70 and Mrs. Martha V. Korte '77  
Mr. Sylvester O. Korte Jr. '65 and Mrs. Kay E. Korte  
Mr. Richard Kosco  
.....  
Ms. Shirley Lodes '64  
Mr. Roger Lowery and Mrs. Elaine Lowery  
Mrs. Shirley J. Luber  
.....  
Mr. William E. Malina '58  
Mr. George J. Manning and Ms. Elizabeth Meinz  
Mr. Douglas Marti

\*denotes deceased

Rev. Bob Thompson and Mrs. Carol Thompson  
Mrs. Dorene G. Tiede  
Mr. Michael J. Toohey and Mrs. Michelle D. Toohey  
Mr. Keith Trahan and Mrs. Lauren A. Trahan '06, MBA '09  
Mr. J. Ed True and Mrs. Myrna L. True  
.....  
Mr. Jack Viner  
Mr. Wayne R. Vonderharr and Mrs. Linda Vonderharr  
.....  
Rev. Dr. Donald C. Wagner '84 and Mrs. Nancy N. Wagner '85  
Mr. Tim Warner and Mrs. Neshala V. Warner '14  
Mr. Matthew Warren and Mrs. Jennifer Warren  
Ms. Donna Weil  
Dr. James Weingartner and Mrs. Jane Weingartner  
.....

Mr. Gerald E. Daugherty and Mrs. Sylvia E. Daugherty  
Lt. Col. Joseph Daylor, USAF Ret. and Mrs. Mary Frances Daylor  
Mr. Dennis Dengler and Mrs. Rosalie Dengler  
Dr. Nichole DeWall and Mr. Brian Pezza  
Ms. Shirley Dickhaut  
Mr. Brian Dineen and Mrs. Cathy Dineen  
Mr. Daniel L. Diveney and Mrs. Diane J. Diveney  
Mr. Ron A. Dormer  
.....

Mr. Charles W. Kamm '55 and Mrs. Lynne P. Kamm  
Ms. Melinda Kaye  
Ms. M. Janet Kelly  
Mr. Dale L. Klohr and Mrs. Carol S. Klohr  
Mr. Jack Klopmeier  
Mr. Edward H. Koch '56 and Mrs. Karen P. Koch  
Mr. Dennis L. Korte '70 and Mrs. Martha V. Korte '77  
Mr. Sylvester O. Korte Jr. '65 and Mrs. Kay E. Korte  
Mr. Richard Kosco  
.....  
Ms. Shirley Lodes '64  
Mr. Roger Lowery and Mrs. Elaine Lowery  
Mrs. Shirley J. Luber  
.....  
Mr. William E. Malina '58  
Mr. George J. Manning and Ms. Elizabeth Meinz  
Mr. Douglas Marti

\*denotes deceased



# Become a *Friend of the Hett!*

*Friends of the Hett* get to take advantage of the *early ticket purchase window*.  
Tickets go on sale for Friends on July 2nd!

## Supporter: \$100+

- Advance ticket purchase privilege
- Order tickets by mail
- Waiting list priority for sold out performances
- Ticket exchange privilege
- Preview Event invitation for two
- Name listed on donor poster in lobby
- Tickets limited to 5, per show, during pre-sale

## Patron: \$250+

- All of Supporter, plus:**
- VIP invitations (pre-show events, meet and greets)
  - Tickets limited to 12, per show, during pre-sale

## Benefactor: \$500+

- All of Patron, plus:**
- Two (2) tickets to any performance
  - Tickets unlimited, during pre-sale

## Star: \$1,000+

- All of Benefactor, plus:**
- Twelve (12) tickets to be used at any performance throughout the season
  - Reserved Seats—your favorite seats held for every show
  - Membership in McKendree's donor recognition group, the **William McKendree Society** (receive special announcements and invitations directly from President Dennis)

## Director's Circle: \$2,000+

- All of Star, plus:**
- Two (2) tickets to each McKendree Presents performance (non-transferable)
  - Complimentary valet for the performance you attend, when available
  - 2 complimentary beverage tickets, when served

## Help make the magic happen

As a lover of the performing arts, you know how critical they are in maintaining the vigor and health of our society. We invite you to join us in our efforts to provide this essential service to our community by contributing to McKendree Presents. As a contributor you will be recognized in our series program. All contributions are tax deductible within current IRS guidelines. Deductions are dependent on the value of the benefits received.

*“One’s blessings, like the arts, are gifts to be shared.”* — FERN M. HETTENHAUSEN

## More ways to give:

### BENEFITS OF THE HETT

The Hett gives the University a unique opportunity to share new and interesting artistic work with the local community, strengthen its relationships with local businesses, and support economic growth and social interaction in the region. Support is paramount to ensuring the arts survive.

### ADVERTISE

Our playbill magazine reaches thousands of people and aligns your brand with one that has a solid reputation for award-winning marketing pieces, first-class customer service and dynamic, engaging programming. Put your business in the spotlight by partnering with us. Contact Liz Crabtree, Assistant Director of Audience Services for more information at 618.537.6863 or theHett@mckendree.edu.

### PROGRAM SPONSORSHIP

The Hett offers the opportunity to develop philanthropic leadership in support of the arts. Appreciation for the arts is a commitment to lifelong learning, cultural diversity, and most importantly, the human imagination. For more information, contact Peter Palermo, Director of the Hettenhausen Center for the Arts, at 618.537.6097 or PJPalermo@mckendree.edu

### MEMORIAL GIVING

The Hettenhausen Center for the Arts building and the George E. McCammon Distinguished Speaker Series were the result of Memorial Giving. With a planned gift, you will help secure the future of the arts and create your own legacy of generosity to the cultural richness of our community. For more information, contact Whitney Strang, Director of Major and Planned Giving, at 618.537.6456 or WBStrang@mckendree.edu.

### VOLUNTEER

Ushers and greeters ensure that each patron has an enjoyable experience at the Hett. For information on volunteering, contact the box office or theHett@mckendree.edu.

Please support our advertisers—  
they help make The Hett *Great!*

## Merrill Lynch is proud to support The Hett.

### The Gray Group



### Merrill Lynch

3121 North Illinois Street  
Suite B  
Swansea, IL 62226

618.233.6387

[fa.ml.com/thegraygroup](http://fa.ml.com/thegraygroup)



Merrill Lynch Wealth Management makes available products and services offered by Merrill Lynch, Pierce, Fenner & Smith Incorporated, a registered broker-dealer and Member SIPC, and other subsidiaries of Bank of America Corporation.

Investment products: **Are Not FDIC Insured** **Are Not Bank Guaranteed** **May Lose Value**

© 2018 Bank of America Corporation. All rights reserved.

ARVBHOMB | AD-04-18-0406 | 470944PM-1017 | 04/2018

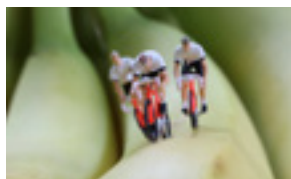
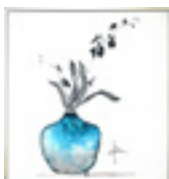
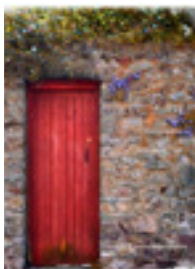
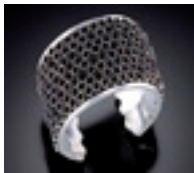




BOX OFFICE

Hours: 12-4 p.m. Monday-Friday  
Phone: 618.537.6863

[www.theHett.com](http://www.theHett.com)  
[theHett@mckendree.edu](mailto:theHett@mckendree.edu)



PRESENTED BY



PRODUCED BY



MEDIA SPONSORS



COMMERCE BANK | BREAK THRU BEVERAGE Belleville Illinois | UMB BANK  
MATHIS, MARIFIAN & RICHTER Ltd. | BANK OF AMERICA | MERRILL LYNCH

[artonthesquare.com](http://artonthesquare.com)