

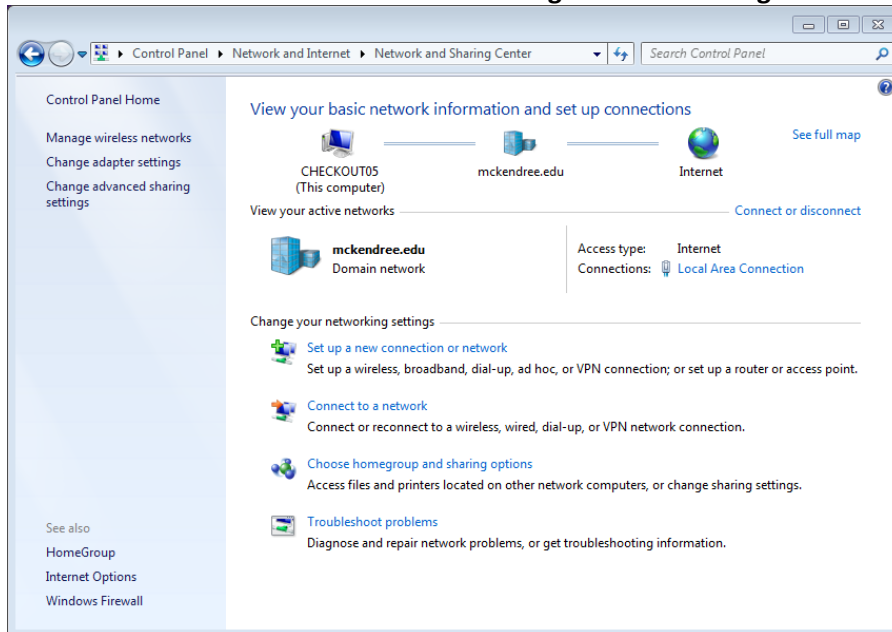
Manual Wireless Profile Configuration Windows 7/Vista

NOTE: If using Windows Vista, skip steps 12-14

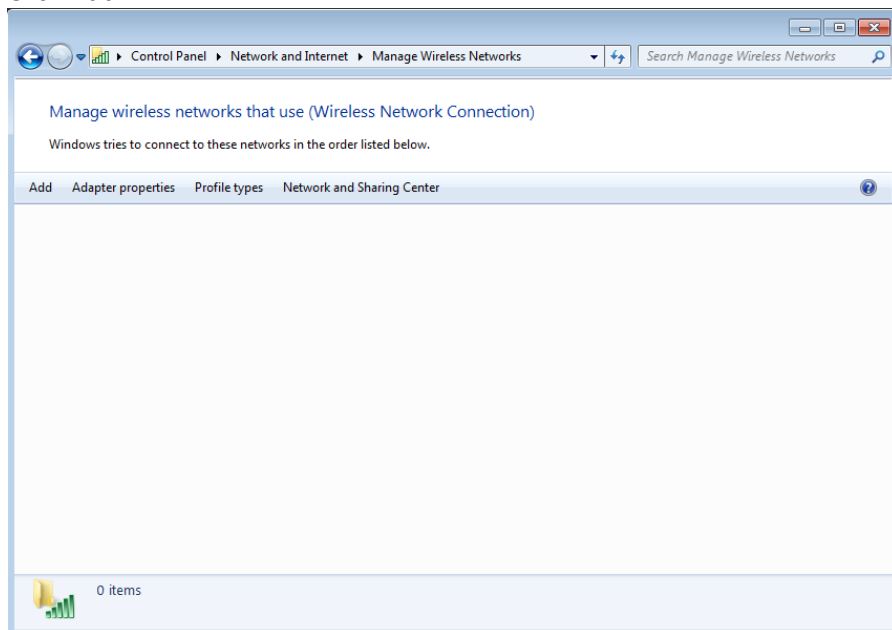
1. Click **Start -> Control Panel -> Network and Internet -> Network and Sharing Center -> Manage Wireless Networks**

OR

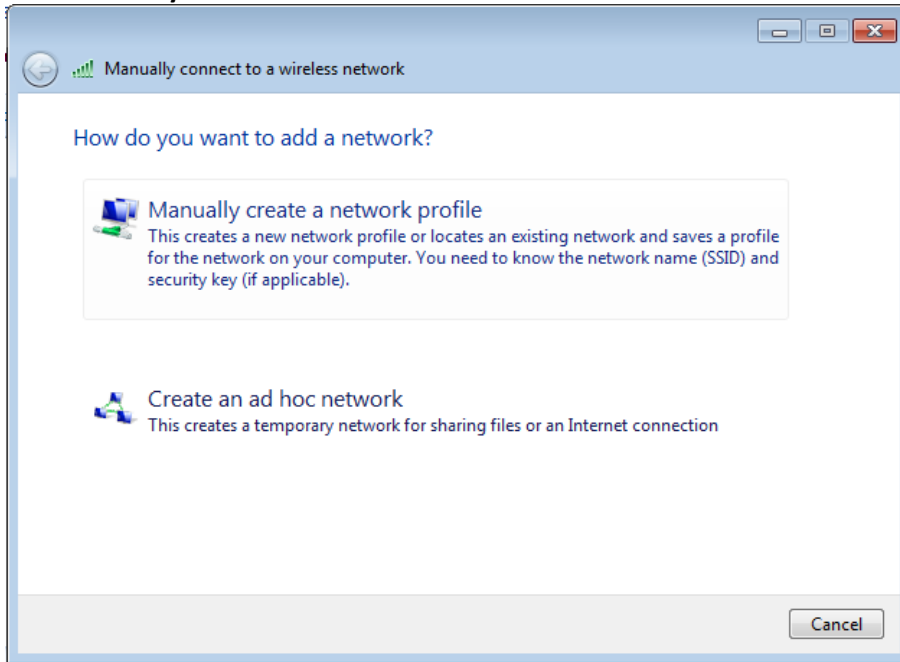
Start -> Control Panel -> Network and Sharing Center -> Manage Wireless Networks



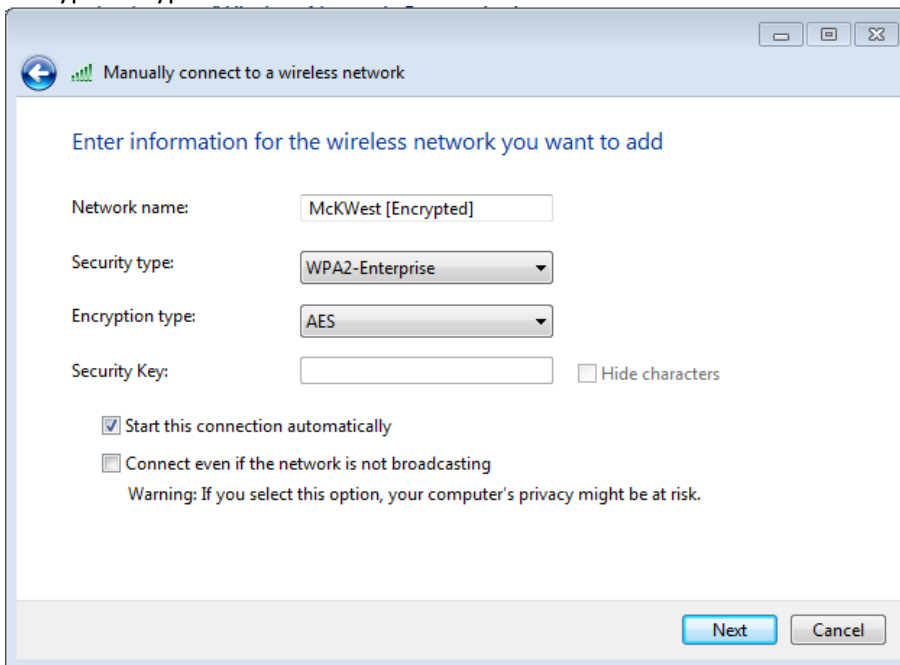
2. Click **Add**



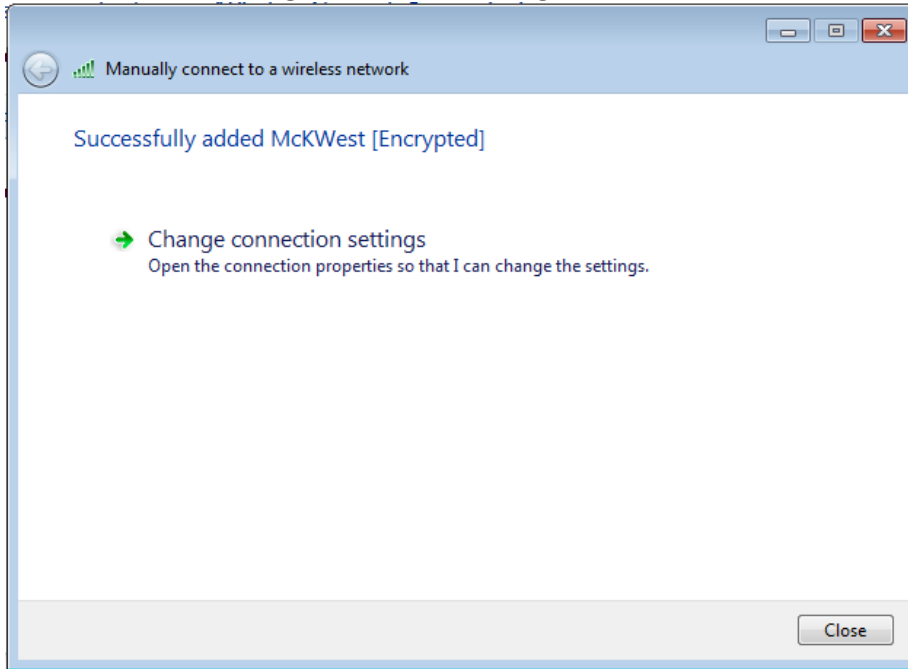
3. Click **Manually Create a Network Profile**



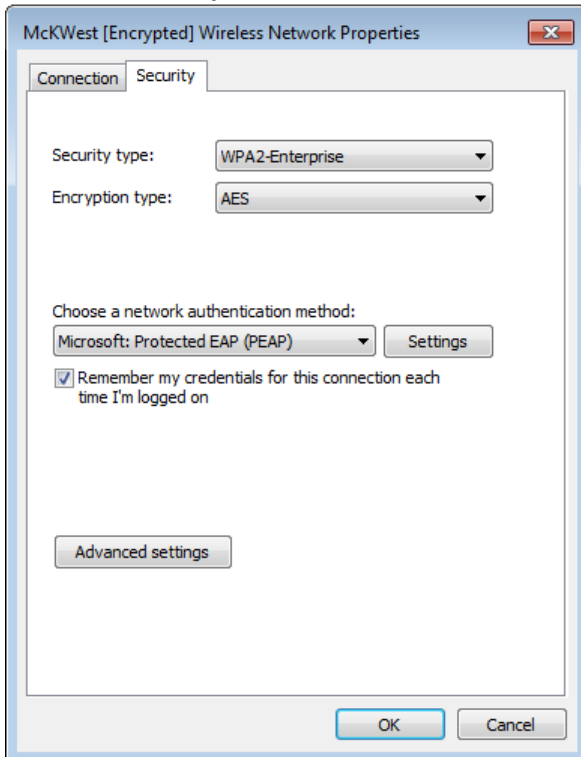
4. Network Name.....McKWest [Encrypted]
Security Type.....WPA2 - Enterprise
Encryption Type.....AES



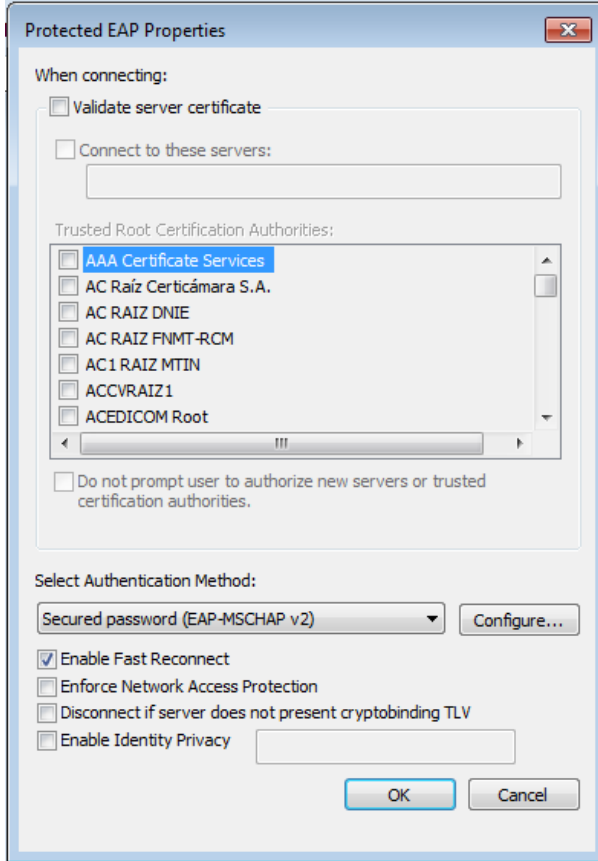
5. Click **Next** -> Click **Change Connection Settings**



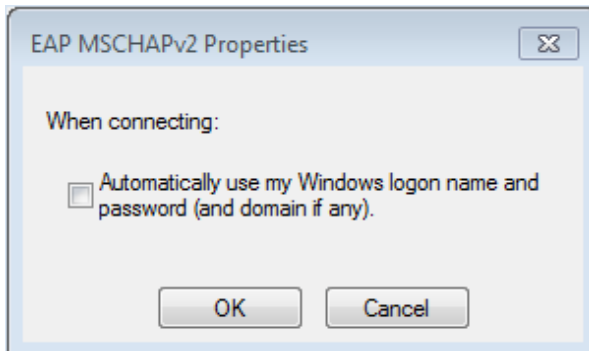
6. Go to the **Security** tab



7. Click **Settings**
8. Uncheck **Validate Server Certificate**

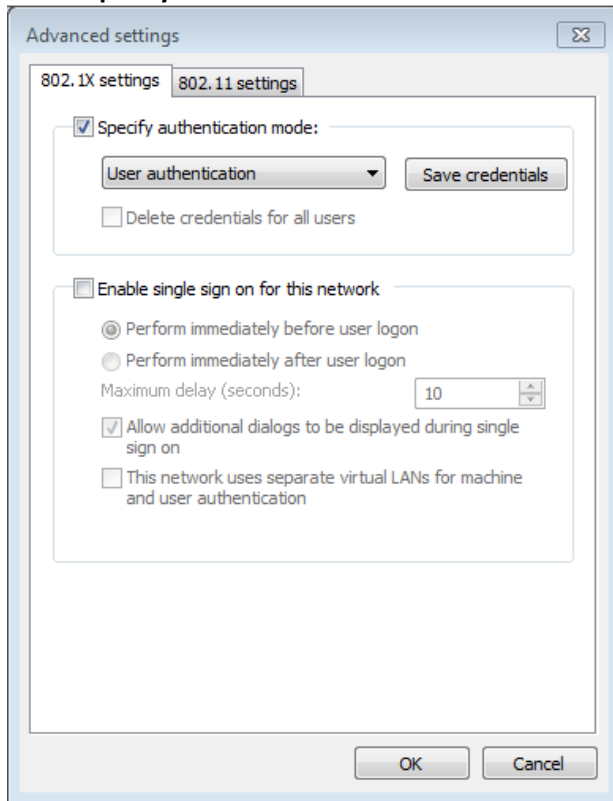


9. Select **Configure**
10. Uncheck the box in this window



11. Click **OK** -> Click **OK**
12. Click **Advanced Settings**

13. Check **Specify Authentication Mode** and set to **User Authentication**



14. Click **OK** -> Click **OK** -> Click **Close**

15. Connect to McKWest [Encrypted] and enter username/password