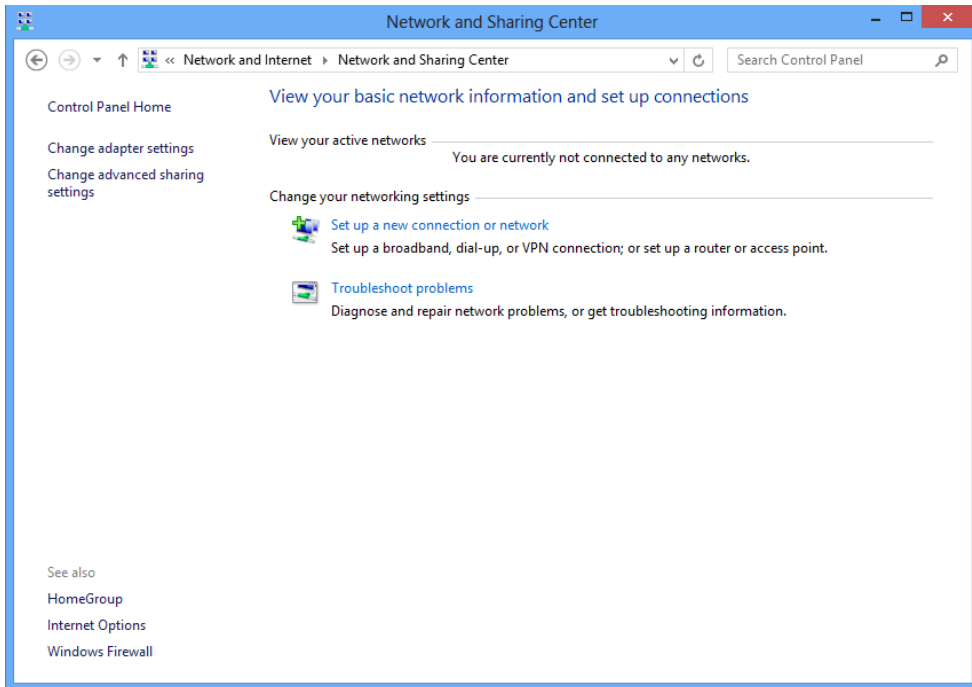
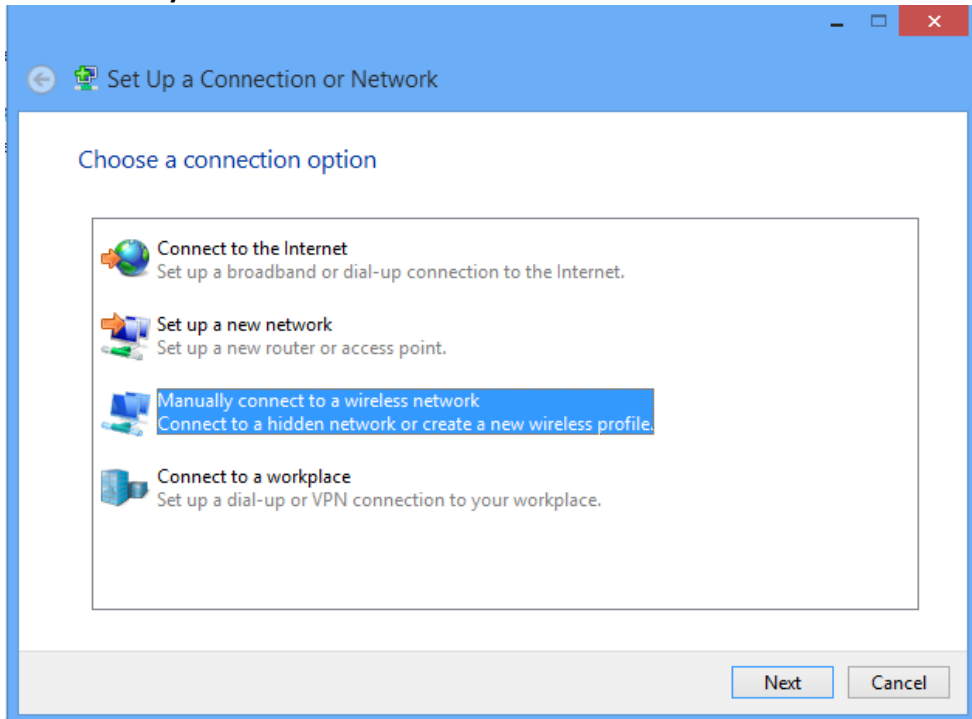


Manual Wireless Profile Configuration Windows 8

1. From the Start screen, type **Control Panel**
2. Click **Control Panel** -> **Network and Internet** -> **Network and Sharing Center** -> **Set up a new connection or network**



3. Click **Manually connect to a wireless network**



4. Click **Next**
5. Network Name.....McKWest [Encrypted]
Security Type.....WPA2 - Enterprise
Encryption Type.....AES

Manually connect to a wireless network

Enter information for the wireless network you want to add

Network name:

Security type:

Encryption type:

Security Key: Hide characters

Start this connection automatically

Connect even if the network is not broadcasting

Warning: If you select this option, your computer's privacy might be at risk.

Next Cancel

6. Click **Next** -> Click **Change Connection Settings**

Manually connect to a wireless network

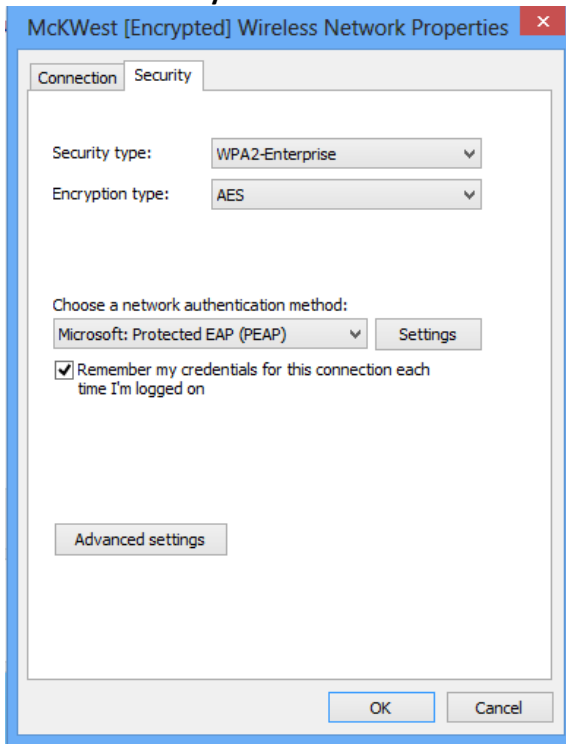
Successfully added McKWest [Encrypted]

→ Change connection settings

Open the connection properties so that I can change the settings.

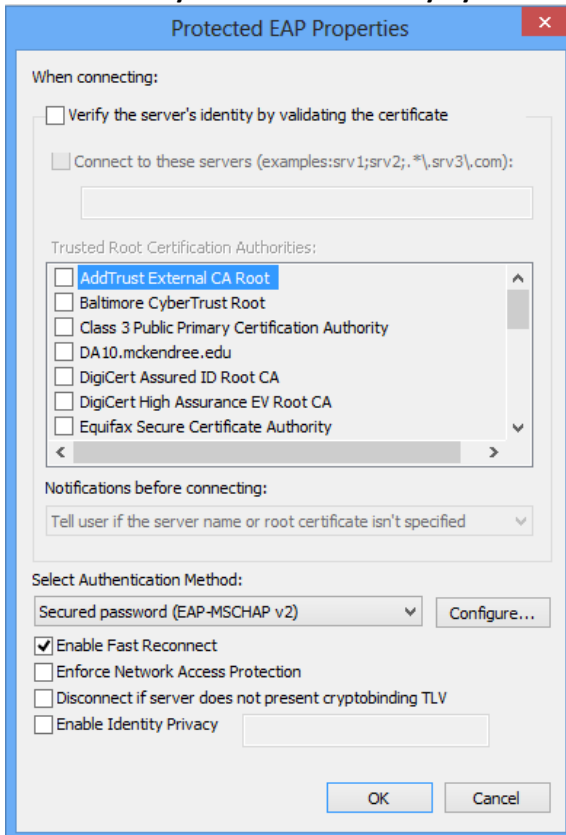
Close

7. Go to the **Security** tab

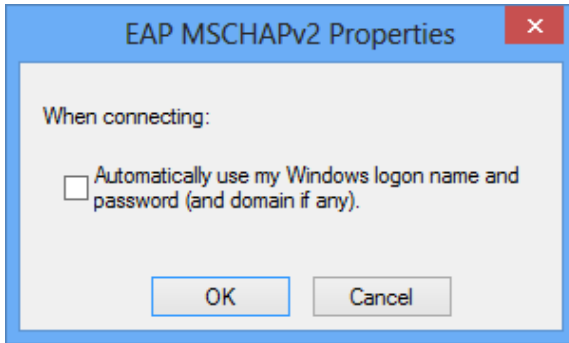


8. Click **Settings**

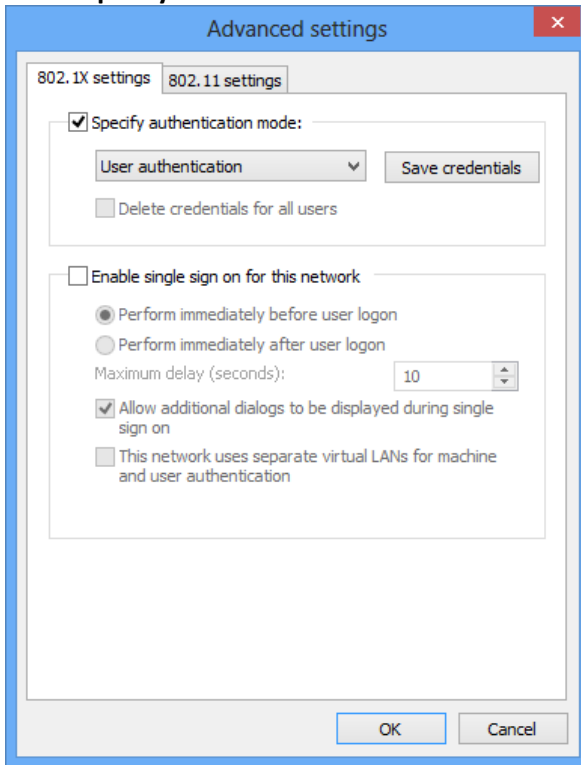
9. Uncheck **Verify the server's identity by validating the certificate**



10. Select **Configure**
11. Uncheck the box in this window



12. Click **OK** -> Click **OK**
13. Click **Advanced Settings**
14. Check **Specify Authentication Mode** and set to **User Authentication**



15. Click **OK** -> Click **OK** -> Click **Close**
16. Connect to McKWest [Encrypted] and enter username/password